



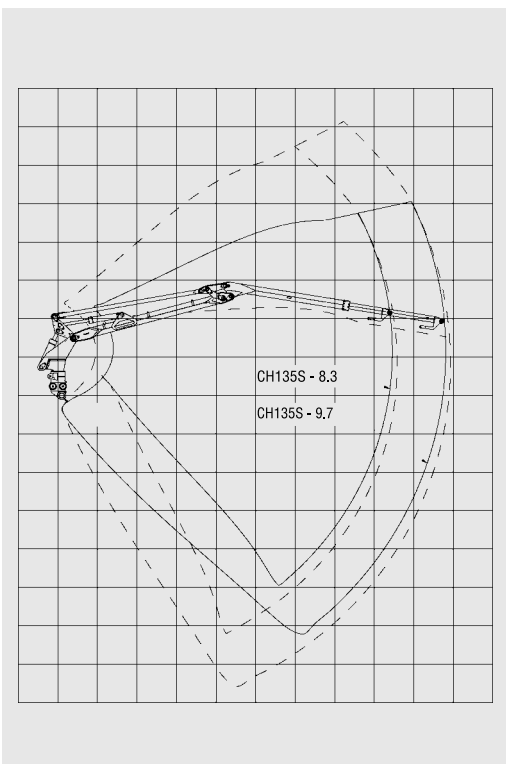
# WARATAH

# CH135S

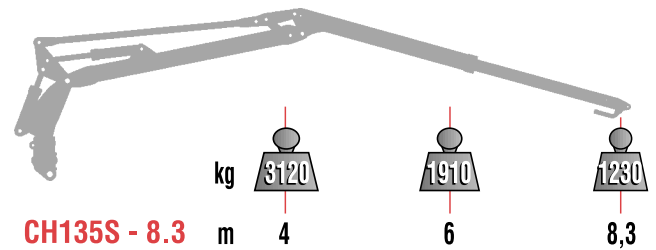
## HARVESTER CRANE



### OUTREACH DIAGRAM:

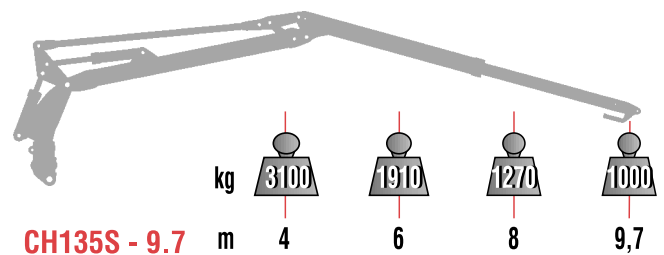


### CAPACITY DIAGRAM (allowed loads):



**CH135S - 8.3** m 4 6 8,3

Actual lifting capacity depends on which link, rotator and harvester head is used.



**CH135S - 9.7** m 4 6 8 9,7

# CH135S

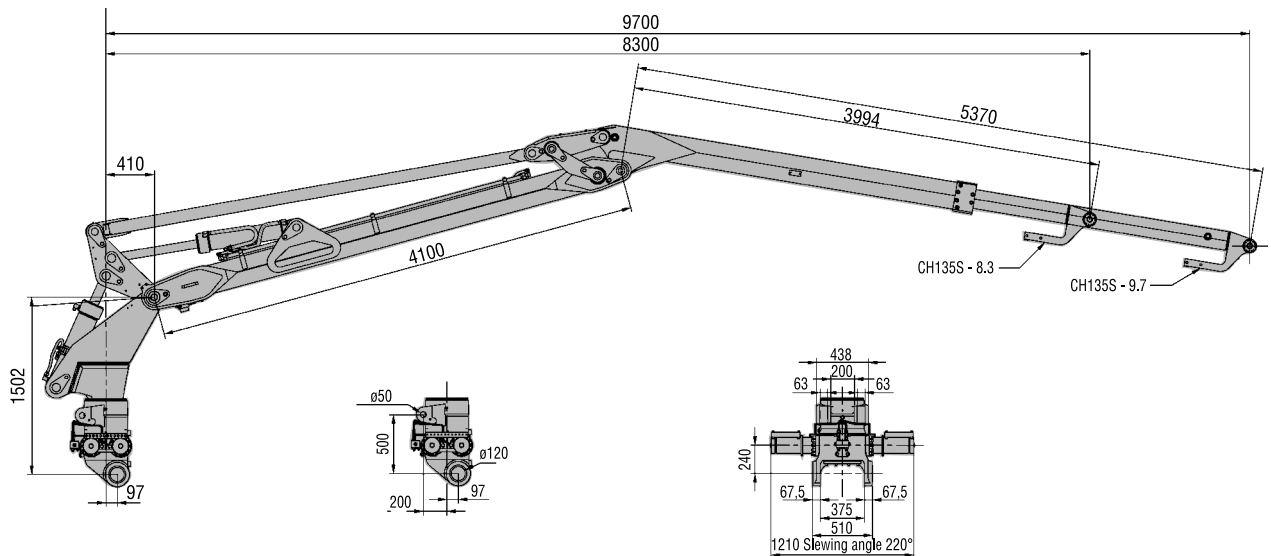
## WARATAH HARVESTER CRANE

### TECHNICAL DATA:

		CH135S - 8.3	CH135S - 9.7	Optional CH135S - 11.0
<b>Lifting moment, gross</b>	kNm	143	143	143
<b>Max. load</b>	kg	1230	950	710
<b>Outreach *)</b>	mm	8600	10 000	11 300
<b>Stroke of boom extension</b>	mm	800	2170	3486
<b>Slewing torque, gross</b>	kNm	38,4	38,4	38,4
<b>Slewing angle</b>	°	220	220	220
<b>Weight without oil, incl. hoses for harvester head</b>	kg	2090	2150	2250
<b>Pump recommendation</b>				
<b>Max. working pressure</b>	MPa	24	24	24
<b>Oil flow</b>	l/min	120	120	120
<b>Power input</b>	kW	50	50	50

\*) Outreach is with the Waratah harvester head.  
Actual length of the crane is 300 mm shorter.

### MAIN DIMENSIONS:



3/06

We reserve the right to amend these specifications at any time without notice. The only warranty provided by Waratah Forestry Attachments is its written Limited Warranty, which accompanies and applies to each product sold by Waratah Forestry Attachments. Waratah disclaims responsibility or liability for any economic loss or personal injury that may occur as a result of any changes to a Waratah product that have not been approved by Waratah

as a result of the non-approved inclusion on any Waratah product of any equipment not of Waratah's design or manufacture. Not all products are available in all markets. The manufacturer reserves the right to make changes or add improvements at any time without incurring any obligation to make such changes on machines manufactured previously.