

HARVESTING/PROCESSING AND FELLING HEADS



# 600 SERIES







**It's no coincidence that Waratah has been an industry-leader for over 45 years. Because we've always listened to you to design durable, more productive and efficient harvesting and processing heads proven for your application.**

At our facilities in Finland and New Zealand, each head is made to order, so you get exactly what you need. Our heads are built to work with advanced technology providing precise control with accurate diameter and length measuring. With on-site facility testing, each product is proven on our time to be profitable on yours.

Our commitment to your success goes beyond product quality. When you put our heads to work, our global support network goes to work for you – from helping you choose the right head, to installation and startup, to being on site when you need us.

We offer the widest range of harvester/processor heads on the market. So whether you're harvesting at the stump, processing at the landing or somewhere in between, Waratah is built to work for you all over the world.



**"Our Waratah helps us get all the monetary value out of every piece of wood."**

Kevin Harrison  
President, Harrison Logging







# 600 SERIES

Continuous 360-degree rotation  
with clean through-nose and  
from-the-side hose configurations

Proven in hardwood and softwood applications,  
Waratah 600-Series harvesters balance toughness with precision.

Advanced on-board  
controller and diagnostics

Heavy-duty  
steel frames

Laser find-end  
log alignment

Hardened alloy long-lasting steel  
pins with split nut pin retention

Single or twin lower  
delimb options

Powerful feed motors appropriately sized  
for best feeding performance

High-torque main saw motors with  
auto-chain tension for long service life and  
available in .404 or 3/4" pitch configurations

Rugged saw box designed for  
multiple logs, butt flare and low  
stump heights when harvesting

Three- or four-wheel synchronized  
drive configurations with log shuffling in  
four-wheel drive multi-stem applications





High load-bearing hanging bracket and rotator

High performance and efficient valves

Easy to service and well-protected hydraulics

Accurate length measuring in single- or multi-stem applications with many optional wheel styles

Standard top saws in .404 or 3/4" pitch

Optional floating or fixed heavy-duty front knives

Advanced delimb geometry for fast picking and stem catching

Heavy-duty cast and fabricated delimb arms with wear-resistant replaceable knife inserts

Proportional soft clamping for delimb and drive arms for less friction and fuel burn

Feed wheel options to suit any application





# HTH616C

Whether you're harvesting, processing or debarking, the versatile HTH616C is quick to handle the task. Although its size is compact, it boasts a large cutting capacity.

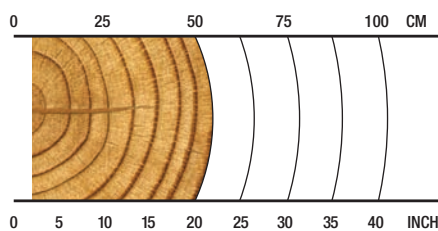
## OVERVIEW

Harvesting in early-to-late thinnings; productive processing or debarking.

## APPLICATIONS

Hardwood harvesting/processing  
Softwood harvesting/processing  
Debarking  
Multi-tree processing  
Multi-tree harvesting  
Early thinnings  
Late or final thinnings/clear felling

## RECOMMENDED RANGE



**5-51 cm / 2-20 in.**

## SPECS



**1970 kg / 4,343 lb.**  
Net Weight



**35 MPa / 5,076 psi**  
Max Hydraulic Pressure



**510 mm / 20 in.**  
Max Delimb Opening



**680 mm / 27 in.**  
Max Feed Roller Opening



**550 mm / 22 in.**  
Maximum Sawing Capacity



**18-24 metric ton**  
Carrier Size





# HTH618C

When it comes to superior delimbing quality, the agile HTH618C is perfectly equipped. Its twin lower delimb arms balance productivity with control.

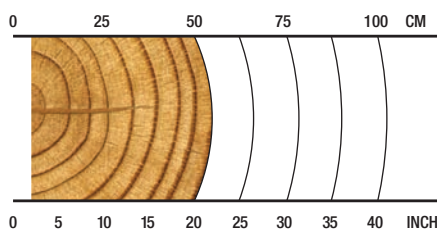
## OVERVIEW

Harvesting in early-to-late thinnings; productive processing or debarking.

## APPLICATIONS

Hardwood harvesting/processing  
Softwood harvesting/processing  
Debarking  
Multi-tree harvesting  
Early thinnings  
Late or final thinnings/clear felling

## RECOMMENDED RANGE



**5-51 cm / 2-20 in.**

## SPECS



**2250 kg / 4,960 lb.**  
Net Weight



**35 MPa / 5,076 psi**  
Max Hydraulic Pressure



**510 mm / 20 in.**  
Max Delimb Opening



**680 mm / 27 in.**  
Max Feed Roller Opening



**550 mm / 22 in.**  
Maximum Sawing Capacity



**20-25 metric ton**  
Carrier Size





# HTH622B SERIES-III

You spoke. We listened. And then we made our all-time leader, the 622B, better than ever. The HTH622B Series-III delivers increased productivity, improved feeding and sawing performance. It's ready for your toughest jobs, and it's simplified to make maintenance a breeze.

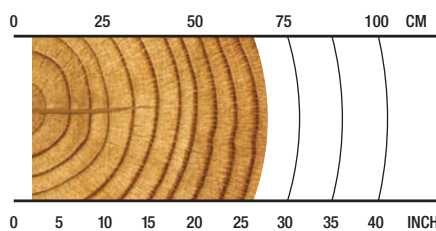
## OVERVIEW

Harvesting in late thinnings or final harvesting of large timber (head-appropriate), hardwood or softwood; some debarking.

## APPLICATIONS

Hardwood harvesting/processing  
Softwood harvesting/processing  
Debarking  
Multi-tree harvesting  
Early thinnings  
Late or final thinnings/clear felling

## RECOMMENDED RANGE



**5-66 cm / 2-26 in.**

## SPECS



**2450 kg / 5,401 lb.**  
Net Weight



**35 MPa / 5,075 psi**  
Max Hydraulic Pressure



**650 mm / 26 in.**  
Max Delimb Opening



**730 mm / 29 in.**  
Max Feed Roller Opening



**750 mm / 30 in.**  
Maximum Sawing Capacity



**24-30 metric ton**  
Carrier Size





# HTH622C 4x4

The HTH622C 4X4 takes productivity and efficiency to a higher level with capabilities including multi-tree processing and independent log shuffling – minimizing waste and maximizing your profits.

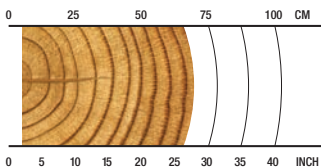
## OVERVIEW

Processing of large diameter timber from log deck; harvesting in late thinnings; final felling of large timber (head appropriate).

## APPLICATIONS

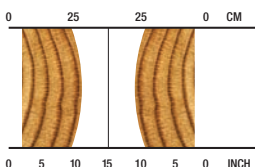
Hardwood harvesting/processing  
Softwood harvesting/processing  
Shovel logging  
Late or final thinnings/clear felling  
Multi-tree processing

## SINGLE STEM RECOMMENDED RANGE



**5-66 cm / 2-26 in.**

## MULTI-STEM RECOMMENDED RANGE (2 LOGS)



**5-28 cm / 2-11 in.**

## SPECS



**2760 kg / 6,085 lb.**  
Net Weight



**35 MPa / 5,076 psi**  
Max Hydraulic Pressure



**650 mm / 26 in.**  
Max Delimb Opening



**780 mm / 31 in.**  
Max Feed Roller Opening



**750 mm / 30 in.**  
Maximum Sawing Capacity



**25-35 metric ton**  
Carrier Size





# HTH623C

Productivity abounds with this over-achiever. The perfect match to a 25-ton carrier, the HTH623C provides exceptional power to weight in its proven durable design – achieving supreme feeding speeds, log control and agility – making short work of the toughest applications.

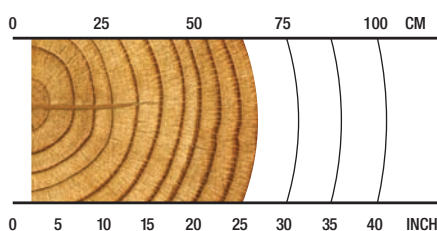
## OVERVIEW

Harvesting in late thinnings; final felling of large timber (head-appropriate), hardwood or softwood; some debarking.

## APPLICATIONS

Hardwood harvesting/processing  
Softwood harvesting/processing  
Debarking  
Shovel logging  
Late or final thinnings/clear felling

## RECOMMENDED RANGE



**5-69 cm / 2-27 in.**

## SPECS



**3040 kg / 6,702 lb.**  
Net Weight



**35 MPa / 5,076 psi**  
Max Hydraulic Pressure



**700 mm / 28 in.**  
Max Delimb Opening



**875 mm / 34 in.**  
Max Feed Roller Opening



**750 mm / 29 in.**  
Maximum Sawing Capacity



**25-34 metric ton**  
Carrier Size





# HTH623C LP

With a shorter tilt frame providing improved reach for higher deck piles, the HTH623C LP is a multi-use head built to work in tight spaces. Its large delimb opening allows for grabbing multiple logs or larger single logs, which increases efficiency and productivity for clearing the chute and loading trucks.

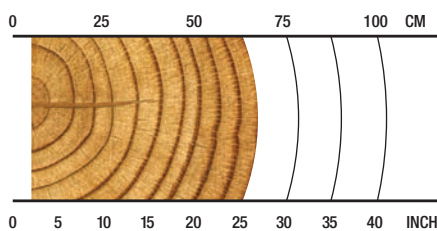
## OVERVIEW

Processing roadside; processing under a yarder, clearing the chute; loading and processing where equipment or space is limited.

## APPLICATIONS

Processing  
Loading/processing  
Shovel logging

## RECOMMENDED RANGE



**5-69 cm / 2-27 in.**

## SPECS



**3140 kg / 6,923 lb.**  
Net Weight



**35 MPa / 5,076 psi**  
Max Hydraulic Pressure



**939 mm / 37 in.**  
Max Delimb Opening



**875 mm / 34 in.**  
Max Feed Roller Opening



**750 mm / 29 in.**  
Maximum Sawing Capacity



**25-34 metric ton**  
Carrier Size





# HTH624C

Work confidently with the rugged and reliable HTH624C. Equipped with a premium valve, this highly productive processor cuts through any challenges – including big timber.

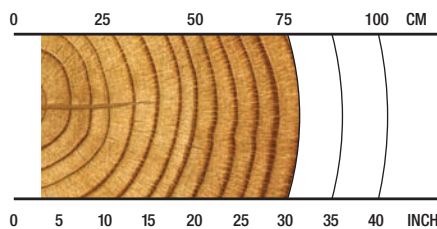
## OVERVIEW

Harvesting in late thinnings;  
final felling of large timber  
(head-appropriate), hardwood  
or softwood.

## APPLICATIONS

Hardwood harvesting/processing  
Softwood harvesting/processing  
Shovel logging  
Late or final thinnings/clear felling

## RECOMMENDED RANGE



**8-76 cm / 3-30 in.**

## SPECS



**3530 kg / 7,782 lb.**  
Net Weight



**35 MPa / 5,076 psi**  
Max Hydraulic Pressure



**760 mm / 30 in.**  
Max Delimb Opening



**850 mm / 34 in.**  
Max Feed Roller Opening



**820 mm / 32 in.**  
Maximum Sawing Capacity



**30+ metric ton**  
Carrier Size





# HTH624C 4x4

Perfectly suited for 27+ metric-ton machines, this four-wheel drive, four-roller head is equally comfortable single stemming large logs or multi-stemming on-demand. Known for exceptional agility and log handling for its size, a large cutting capacity and outstanding traction, the HTH624C 4x4 boosts productivity in demanding applications.

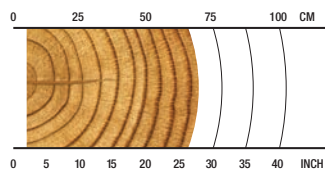
## OVERVIEW

Harvesting in late thinnings;  
final felling of large timber  
(head-appropriate), hardwood  
or softwood.

## APPLICATIONS

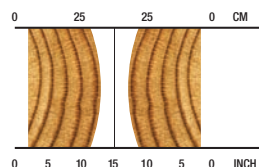
Hardwood harvesting/processing  
Softwood harvesting/processing  
Shovel logging  
Late or final thinnings/clear felling

## SINGLE STEM RECOMMENDED RANGE



**5-71 cm / 2-28 in.**

## MULTI-STEM RECOMMENDED RANGE (2 LOGS)



**5-33 cm / 2-13 in.**

## SPECS



**3560 kg / 7,848 lb.**  
Net Weight



**35 MPa / 5,076 psi**  
Max Hydraulic Pressure



**710 mm / 28 in.**  
Max Delimb Opening



**875 mm / 34 in.**  
Max Feed Roller Opening



**820 mm / 32 in.**  
Maximum Sawing Capacity



**27+ metric ton**  
Carrier Size





# HTH625C

The aggressive HTH625C optimizes productivity with impressive log control. This high-performer flies through timber with great log handling with twin lower delimb arms.

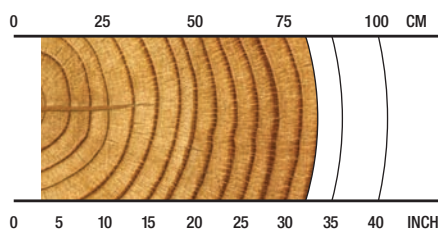
## OVERVIEW

Harvesting in late thinnings;  
final felling of large timber  
(head-appropriate), hardwood  
or softwood.

## APPLICATIONS

Hardwood harvesting/processing  
Softwood harvesting/processing  
Shovel logging  
Late or final thinnings/clear felling

## RECOMMENDED RANGE



**8-81 cm / 3-32 in.**

## SPECS



**4390 kg / 9,678 lb.**  
Net Weight



**35 MPa / 5,076 psi**  
Max Hydraulic Pressure



**800 mm / 31 in.**  
Max Delimb Opening



**850 mm / 34 in.**  
Max Feed Roller Opening



**900 mm / 35 in.**  
Maximum Sawing Capacity



**35+ metric ton**  
Carrier Size





# HTH626 SERIES-II

Large timber is no match for the tough HTH626 Series II, specifically designed to dominate large-diameter wood for felling, delimbing and processing.

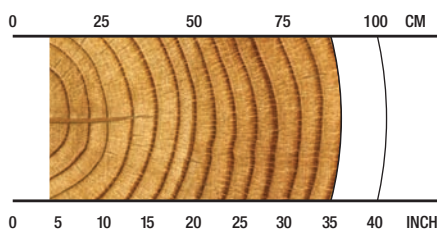
## OVERVIEW

Final felling or harvesting of large timber; optimum delimbing force.

## APPLICATIONS

Softwood harvesting/processing  
Shovel logging  
Late or final thinnings/clear felling

## RECOMMENDED RANGE



**10-88 cm / 4-35 in.**

## SPECS



**4850 kg / 10,692 lb.**  
Net Weight



**35 MPa / 5,076 psi**  
Max Hydraulic Pressure



**900 mm / 35 in**  
Max Delimb Opening



**980 mm / 39 in.**  
Max Feed Roller Opening



**860 mm / 34 in.**  
Maximum Sawing Capacity



**35+ metric ton**  
Carrier Size





# FL85 SERIES-II

Whether you're tethered on steep slope, or just looking for a heavy-duty mid-range felling head, the versatile FL85 Series -II has just the right weight for stability on steep ground, a large cutting capacity and grapple — this durable, multi-use head provides a productivity boost in any felling application.

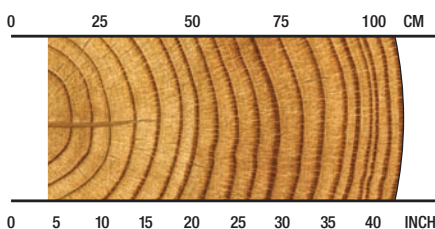
## OVERVIEW

Thinnings, steep slope, shovel logging, topping, storm damage, clean-up.

## APPLICATIONS

Shovel logging  
Early thinnings  
Late or final thinnings/clear felling  
Topping  
Storm damage  
Steep slope

## RECOMMENDED RANGE



**10-110cm / 4-43 in.**

## SPECS



**1747 kg / 3,851 lb.**  
Net Weight



**25 MPa / 3,625 psi**  
Max Hydraulic Pressure



**1100 mm / 43 in.**  
Max Grapple Opening



**925 mm / 36 in.**  
Maximum Sawing Capacity



**20-27 metric ton**  
Carrier Size



## TimberRite™ X-20



The FL100's TimberRite™ X-20 system is Waratah's next generation felling head controller adaptable to any make of carrier. It features a new 7 in. display, trigger-style joysticks, and expanded operational capabilities, and configurable settings for customized felling head operation for any application. Some features include a stem counter, saw cut/home indication, tilt lock and on-board diagnostics. The TimberRite X-20 enhances the operational experience and provides more flexibility for any application to get the job done.



# FL100

**Unmatched strength plus versatility. Meet the FL100. This bonafide jack-of-all-trades owns the steepest of slopes and shovels the heaviest of timber, all while getting better logs to the landing. Simply put, it's a beast. And truly Built to Work™.**

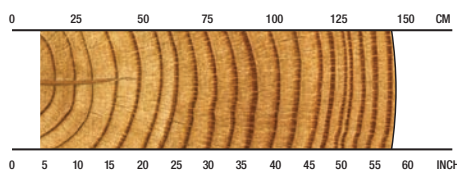
### OVERVIEW

Thinnings, steep slope, shovel logging/hoe-chucking, topping, storm damage, clean-up.

### APPLICATIONS

Shovel logging  
Late or final thinnings/clear felling  
Topping  
Storm damage  
Steep slope

### RECOMMENDED RANGE



## 11-147 cm / 4.3-57.9 in.

### SPECS



**2995 kg / 6,600 lb.**  
Net Weight



**35 MPa / 5,076 psi**  
Max Hydraulic Pressure



**1470 mm / 57.8 in.**  
Max Grapple Opening



**1000 mm / 39.3 in.**  
Maximum Sawing Capacity



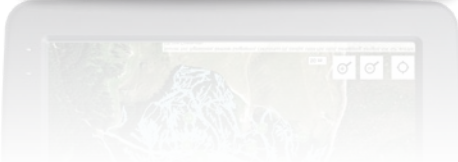
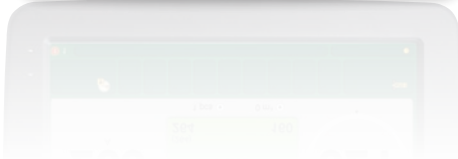
**30+ metric ton**  
Carrier Size



# MEASURING AND CONTROL SYSTEMS

We focus on providing you with accurate diameter and length measuring systems for profitable precision. Simplify operations and boost productivity with real-time statistics and measuring information, and wireless data transfer.

## TIMBERRITE™ H-16



Imagine a fast, powerful control system that manages your workload and links your office to the forest.

The productive TimberRite measuring and control system uses a powerful Windows PC, providing accurate measuring technology and responsive head control for efficient operational productivity.

It records production information, tracks productivity, and packages all files in the latest StanForD 2010 format to ensure data interchanges with virtually any professional system in the forest industry.

Additionally, this user-friendly system has email capabilities, and can utilize our WaratahMate™ smartphone app for the efficient and timely transfer of production information and other important files regardless of your location. Configurable as standard with Pre-Selection priority, or optionally with Value Optimization it can manage your output to keep step with market demands. TimberRite keeps you productive and informed to manage your workload for whatever your market requires.

### KEY FEATURES

- **Onboard mapping** - (optional) - access your location and visualize your production data.
- **Pre-Selection Priority** - (standard) - sequential optimization by cutting list instruction, and alternate log assignments.
- **Value Optimization** - (optional) - value-based optimization, intuitive prognosis through intelligent assessment of advanced matrices.
- **Touch-screen display**, or wireless keyboard and touch pad mouse.
- **Windows™ PC** - based controller integrates the harvester head measuring and control system with the high processing power of a personal computer.
- **StanForD 2010** file structure ensures data interchanges with other professional systems in the forest industry.
- **Automatic file sending** - production reports, worksite instructions, repair follow-ups, calibration history, log tables, machine settings and harvesting instructions.
- **WaratahMate™ smartphone app** - Easily transfer data wirelessly regardless of location, or through email via phone USB.
- **Work & repair statistics** - Monitor uptime, productivity and operating costs.
- **Species specific calibration and soft-clamping** settings for delim and drive arms.
- **Operator specific settings** and configurable menus for quick navigation and adjustments.
- **Extensive site documentation** - expanded site, contractor, and machine information.
- **Simplified diagnostics** - input and output tests with built-in diagnostic troubleshooting assistance.



# OPTIONS

Waratah heads are configurable to your application.  
Consult your dealer for option availability.



## Configurability

Waratah has a wide range of focused options for harvesting and processing applications including single- and multi-stem processing, multi-tree handling, and all models include options for softwood, crooked hardwood and debarking.



## Color Marking

Waratah offers nozzle-applied color marking systems to simplify log identification. Three colors provide many assortment combinations to either the small or large ends, improving sorting and yard safety.



## Main Saws, Saw Motors, Top Saws

The 600 series have high-cutting capacity main saws for extra productivity in large wood. Select models have .404 and 3/4" pitch chain options; all main saws include auto chain tensioning and are driven by durable and efficient high torque saw motors. The top saws increase productivity in any processing and crooked wood applications and are standard equipment on all 600 series models.



## Measuring Wheels

Application-specific measuring wheels are engineered for accurate and consistent measuring in all tree species with enhancements for log quality. Selections include wide and narrow models, coarse and fine teeth options, and multi-stem, debarking configurations.



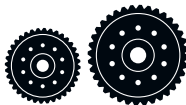
## Delimb Arms

Select models can be configured for more productivity and log quality enhancements with specific harvesting or processing upper delimb arms, and single or twin lower delimb options. All have durable, pre-formed hardened steel replaceable knife inserts.



## Rotators

Waratah offers a productive 360-degree continuous rotation on all of the 600 series models, with options of hoses through the rotate unit or from the side. It assures a cleaner look and more uptime. Also included are options of non-continuous 320-degree and Indexator brand options on select models.



## Feed Rollers

Many feed roller options are available for a variety of applications, offering improved traction and reducing fiber damage. Wheel options include eucalyptus debarking, bar, thumbnail, alpine, rubber and non-aggressive styles.



## Multi-tree Handling

Select models have multi-tree handling (MTH) capabilities, providing superior accumulating and precise bundle feeding with the option. MTH ability increases productivity and can easily be installed between the rotator and hanging bracket – even on existing heads.



## Front Knives

Waratah offers heavy-duty floating or fixed front knife options with specialized profiles and cutting edges for superior delimbing in any application.



## Stump Treatment

Stump treatment kits available for select models.

Talk to your Waratah dealer about more available options.



	HTH616C	HTH618C	HTH622B SERIES-III
<b>DIMENSIONS</b>			
Width, head open (mm/in.)	1600 / 63	1600 / 63	1700 / 67
<b>WEIGHT</b>			
Excluding link and some options (kg/lb.)	1970 / 4,343	2250 / 4,960	2450 / 5,401
<b>ROTATION</b>			
	360 continuous or 320 degree	360 continuous	360 continuous
<b>DELIMBING</b>			
Delimbing knives	1 fixed front, 2 moving*, 1 fixed rear (*option for single lower delimb)	1 fixed front, 4 moving, 1 fixed rear	1 fixed/floating, 2 moving, 1 fixed rear
Lower delimb (standard/option, (qty))	option, 1	standard, 2	
Maximum delimb opening processing arms or felling head grapple opening (mm/in.)	510 / 20	510 / 20	650 / 26
Maximum delimb opening CTL arms (mm/in.)	700 / 28	700 / 28	
Maximum opening lower knives (mm/in.)	650 / 26	650 / 26	
<b>DRIVE</b>			
Quantity drive rollers	3	3	3
Motor cc - option 1 (drive, fixed)	(500,315)	(500,315)	(702,400)
Maximum feed speed - option 1 (m/s, ft/s)	8.3 / 27	8.3 / 27	6.5 / 21.3
Maximum roller opening (mm/in.)	680 / 27	680 / 27	730 / 29
Motor cc - option 2 (drive, fixed)	(630,400)	(630,400)	
Maximum feed speed - option 2 (m/s, ft/s)	6.6 / 22	6.6 / 22	
Minimum feed arm diameter (mm/in.)	50 / 2	50 / 2	50 / 2
<b>TOP SAW</b>			
Maximum cut diameter (mm/in.)	320 / 13	320 / 13	400 / 16
Length of saw bar (mm/in.)	420 / 17	420 / 17	640 / 25
Chain type (in.)	0.404	0.404	0.404
Top saw motor displacement	10 cc	10 cc	10 cc
<b>BUTT / FELLING SAW</b>			
Standard Saw	SC100	Waratah AT 3/4"	SC100
Maximum cut diameter (mm/in.)	550 / 22	550 / 22	750 / 29.5
Length of saw bar (mm/in.)	750 / 29	750 / 29	820 / 32
Chain type (in.)	0.404	3/4"	0.404
Saw motor	3/4" - 45 cc & .404 - 20 cc	3/4" - 45 cc	3/4" - 50 cc & .404 - 20 cc
Oil tank capacity (L/gal.)	10 / 2.6	10 / 2.6	12 / 3.2
<b>CARRIER RANGE</b>			
Metric tons	18-24 metric tons	20-25 metric tons	24-30 metric tons
<b>HYDRAULIC SYSTEM</b>			
Maximum operating pressure (MPa/psi)	35 / 5,076	35 / 5,076	35 / 5,075
Maximum pump capacity (L/min.,gal./min.)	320-360 / 85-95	320-360 / 85-95	320-360 / 85-95
<b>CONTROL AND MEASURING SYSTEM</b>			
	<b>TimberRite H-16</b>	<b>TimberRite H-16</b>	<b>TimberRite H-16</b>
<b>OPTIONAL EQUIPMENT</b>			
Optional Butt Saw	Waratah AT 3/4"	SC100	Waratah AT 3/4"
Maximum cut diameter (mm/in.)	550 / 22	550 / 22	750 / 30
Length of saw bar (mm/in.)	740 / 29	750 / 29	820 / 32
Optional Top Saw			
Maximum cut diameter (mm/in.)			
Length of saw bar (mm/in.)			
No top saw	yes	yes	yes
Continuous 360-degree rotation	yes	yes	yes
Color marking	inquire	inquire	yes
Stump spray	inquire	inquire	inquire
Multi-tree harvesting (*320 degree rotation only)	yes*	no	no
Multi-tree processing	yes	yes	no
Fabricated processing upper delimb arms	yes	yes	no
Cast processing upper delimb arms	yes	yes	yes
Harvesting (CTL) upper delimb arms	yes	yes	no
Debarking feed rollers	yes	yes	yes
Steel thumbnail feed rollers	yes	yes	yes
Alpine	yes	yes	yes
Non-aggressive fixed roller	no	no	yes
Steel ribbed feed rollers	no	no	yes



This brochure has been compiled with care for worldwide circulation. While general information, pictures and descriptions are provided, some illustrations and text may include options and accessories not available in all regions. Please contact your local dealer for details. Waratah reserves the right to change specifications and design for products described in this brochure without notice. No liability for errors and omissions.

	HTH622C 4x4	HTH623C	HTH623C LP	HTH624C
<b>DIMENSIONS</b>				
Width, head open (mm/in.)	1820 / 72	2000 / 79	2000 / 79	2000 / 79
<b>WEIGHT</b>				
Excluding link and some options (kg/lb.)	2760 / 6,085	3040 / 6,702	3140 / 6,923	3530 / 7,782
<b>ROTATION</b>				
	360 continuous	360 continuous	360 continuous	360 continuous
<b>DELIMBING</b>				
Delimbing knives	1 fixed/floating, 2 moving, 1 fixed rear	1 fixed/floating, 2 moving*, 1 fixed rear (*option for single lower delimb)	1 fixed/floating, 2 moving, 1 fixed rear	1 floating, 2 moving, 1 fixed rear
Lower delimb (standard/option, (qty))		option, 1		
Maximum delimb opening processing arms or felling head grapple opening (mm/in.)	650 / 26	700 / 28	939 / 37	760 / 30
Maximum delimb opening CTL arms (mm/in.)				700 / 27.5
Maximum opening lower knives (mm/in.)		885 / 35	885 / 35	
<b>DRIVE</b>				
Quantity drive rollers	4	3	3	3
Motor cc - option 1 (drive, fixed)	(702,400)	(837,500)	(837,500)	(1048,630)
Maximum feed speed - option 1 (m/s, ft/s)	6.5 / 21	5.2 / 17	5.2 / 17	4.6 / 15.2
Maximum roller opening (mm/in.)	780 / 31	875 / 34	875 / 34	850 / 33
Motor cc - option 2 (drive, fixed)		(1048,630)	(1048,630)	
Maximum feed speed - option 2 (m/s, ft/s)		4.6 / 15.1	4.6 / 15.1	
Minimum feed arm diameter (mm/in.)	50 / 2	65 / 2.6	65 / 2.6	80 / 3
<b>TOP SAW</b>				
Maximum cut diameter (mm/in.)	400 / 16	450 / 18	450 / 18	500 / 20
Length of saw bar (mm/in.)	640 / 25	590 / 23	590 / 23	750 / 29.5
Chain type (in.)	0.404	0.404	0.404	0.404
Top saw motor displacement	10 cc	19 cc	19 cc	20 cc
<b>BUTT / FELLING SAW</b>				
Standard Saw	Waratah AT 3/4	Waratah AT 3/4	Waratah AT 3/4	Waratah AT 3/4
Maximum cut diameter (mm/in.)	750 / 30	750 / 30	750 / 30	810 / 32
Length of saw bar (mm/in.)	900 / 35	900 / 35	900 / 35	965 / 38
Chain type (in.)	3/4"	3/4"	3/4"	3/4"
Saw motor	50 cc	45 cc	45 cc	50 cc
Oil tank capacity (L/gal.)	22 / 4.8	16 / 4.2	16 / 4.2	16 / 4.2
<b>CARRIER RANGE</b>				
Metric tons	25-35 metric tons	25-34 metric tons	25-34 metric tons	30+ metric tons
<b>HYDRAULIC SYSTEM</b>				
Maximum operating pressure (MPa/psi)	35 / 5,076	35 / 5,076	35 / 5,076	35 / 5,076
Maximum pump capacity (L/min..gal./min.)	320-360 / 85-95	320-360 / 85-95	320-360 / 85-95	320-360 / 85-95
<b>CONTROL AND MEASURING SYSTEM</b>				
	<b>TimberRite H-16</b>	<b>TimberRite H-16</b>	<b>TimberRite H-16</b>	<b>TimberRite H-16</b>
<b>OPTIONAL EQUIPMENT</b>				
Optional Butt Saw	SC100	SC100	SC100	
Maximum cut diameter (mm/in.)	750 / 29.5	750 / 29.5	750 / 29.5	
Length of saw bar (mm/in.)	900 / 35.4	820 / 32	820 / 32	
Optional Top Saw				Waratah 3/4"
Maximum cut diameter (mm/in.)				500 / 20
Length of saw bar (mm/in.)				715 / 28
No top saw	no	yes	yes	yes
Continuous 360-degree rotation	yes	yes	yes	yes
Color marking	no	yes	yes	yes
Stump spray	no	inquire	inquire	no
Multi-tree harvesting	no	no	no	no
Multi-tree processing	yes	no	no	no
Fabricated processing upper delimb arms	yes	yes	yes	no
Cast processing upper delimb arms	yes	yes	yes	yes
Harvesting (CTL) upper delimb arms	no	no	no	no
Debarking feed rollers	yes	yes	yes	no
Steel thumbnail feed rollers	yes	yes	yes	yes
Alpine	yes	yes	yes	yes
Non-aggressive fixed roller	no	yes	yes	no
Steel ribbed feed rollers	no	no	no	no



	HTH624C 4x4	HTH625C	HTH626 SERIES-II
<b>DIMENSIONS</b>			
Width, head open (mm/in.)	2000 / 79	2000 / 79	2200 / 87
<b>WEIGHT</b>			
Excluding link and some options (kg/lb.)	3560 / 7,848	4390 / 9,678	4850 / 10,692
<b>ROTATION</b>			
	360 continuous	360 continuous	360 continuous
<b>DELIMBING</b>			
Delimbing knives	1 fixed, /1 floating, 2 moving*, 1 fixed rear (*option for single lower delimb)	1 floating, 2 moving	1 floating, 2 moving
Lower delimb (standard/option, (qty))	option, 1	standard, 2	
Maximum delimb opening processing arms or felling head grapple opening (mm/in.)	710 / 28	800 / 31	900 / 35
Maximum delimb opening CTL arms (mm/in.)			
Maximum opening lower knives (mm/in.)	885 / 35	885 / 35	
<b>DRIVE</b>			
Quantity drive rollers	4	3	3
Motor cc - option 1 (drive, fixed)	(837,500)	(1395,800)	(1395,800)
Maximum feed speed - option 1 (m/s, ft/s)	5.2 / 17	3.5 / 11.4	3.5 / 11.4
Maximum roller opening (mm/in.)	875 / 34	850 / 34	980 / 39
Motor cc - option 2 (drive, fixed)	(1048,630)		
Maximum feed speed - option 2 (m/s, ft/s)	4.6 / 15.1		
Minimum feed arm diameter (mm/in.)	65 / 2.6	80 / 3	100 / 4
<b>TOP SAW</b>			
Maximum cut diameter (mm/in.)	560 / 22	500 / 20	400 / 16
Length of saw bar (mm/in.)	740 / 29	715 / 28	590 / 23
Chain type (in.)	3/4"	3/4"	0.404
Top saw motor displacement	20 cc	20 cc	19 cc
<b>BUTT / FELLING SAW</b>			
Standard Saw	Waratah AT 3/4	Waratah AT 3/4	Waratah AT 3/4
Maximum cut diameter (mm/in.)	815 / 32	900 / 35	860 / 34
Length of saw bar (mm/in.)	1015 / 40	1020 / 40	960 / 38
Chain type (in.)	3/4"	3/4"	3/4"
Saw motor	50 cc	50 cc	50 cc
Oil tank capacity (L/gal.)	16 / 4.2	22 / 5.8	25 / 6.6
<b>CARRIER RANGE</b>			
Metric tons	27+ metric tons	30+ metric tons	35+ metric tons
<b>HYDRAULIC SYSTEM</b>			
Maximum operating pressure (MPa/psi)	35 / 5,076	35 / 5,076	35 / 5,076
Maximum pump capacity (L/min., gal./min.)	320-360 / 85-95	320-360 / 85-95	320-360 / 85-95
<b>CONTROL AND MEASURING SYSTEM</b>			
	TimberRite H-16	TimberRite H-16	TimberRite H-16
<b>OPTIONAL EQUIPMENT</b>			
Optional Butt Saw			
Maximum cut diameter (mm/in.)			
Length of saw bar (mm/in.)			
Optional Top Saw			
Maximum cut diameter (mm/in.)	Waratah 0.404	Waratah 0.404	
Length of saw bar (mm/in.)	560 / 22	500 / 20	
	820 / 32	750 / 30	
No top saw	no	no	yes
Continuous 360-degree rotation	yes	yes	yes
Color marking	no	yes	yes
Stump spray	no	no	no
Multi-tree harvesting	no	no	no
Multi-tree processing	yes	no	no
Fabricated processing upper delimb arms	yes	yes	yes
Cast processing upper delimb arms	yes	no	no
Harvesting (CTL) upper delimb arms	no	no	no
Debarking feed rollers	no	no	yes
Steel thumbnail feed rollers	yes	yes	no
Alpine	yes	yes	yes
Non-aggressive fixed roller	yes	no	no
Steel ribbed feed rollers	no	no	no



This brochure has been compiled with care for worldwide circulation. While general information, pictures and descriptions are provided, some illustrations and text may include options and accessories not available in all regions. Please contact your local dealer for details. Waratah reserves the right to change specifications and design for products described in this brochure without notice. No liability for errors and omissions.

	FL85 SERIES-II	FL100
<b>DIMENSIONS</b>		
Width, head open (mm/in.)	1822 / 71.7	2270 / 89.4
<b>WEIGHT</b>		
Excluding link and some options (kg/lb.)	1747 / 3,851	2995 / 6600
<b>ROTATION</b>		
	360 continuous	360 continuous, 2 motors
<b>DELIMBING</b>		
Delimbing knives		
Lower delimb (standard/option, (qty))		
Maximum delimb opening processing arms or felling head grapple opening (mm/in.)	685 / 27	1470 / 57.8
Maximum delimb opening CTL arms (mm/in.)		
Maximum opening lower knives (mm/in.)		
<b>DRIVE</b>		
Quantity drive rollers		
Motor cc - option 1 (drive, fixed)		
Maximum feed speed (m/s, ft/s)		
Maximum roller opening (mm/in.)		
Motor cc - option 2 (drive, fixed)		
Minimum feed arm diameter (mm/in.)		
<b>TOP SAW</b>		
Maximum cut diameter (mm/in.)		
Length of saw bar (mm/in.)		
Chain type (in.)		
Top saw motor displacement		
<b>BUTT / FELLING SAW</b>		
Standard Saw	SuperCut 300	
Maximum cut diameter (mm/in.)	925 / 36	1000 / 39
Length of saw bar (mm/in.)	1130 / 44.5	1140 / 45
Chain type (in.)	3/4"	3/4"
Saw motor		50 cc
Oil tank capacity (L/gal.)	43 / 11.3	35 / 9.25
<b>CARRIER RANGE</b>		
Metric tons	20-27 metric tons	30+ metric tons
<b>HYDRAULIC SYSTEM</b>		
Maximum operating pressure (MPa/psi)	25 / 3,625	35 / 5,076
Maximum pump capacity (L/min.,gal./min.)	220 / 58	300 / 79
<b>CONTROL AND MEASURING SYSTEM</b>		<b>TimberRite X-20</b>
<b>OPTIONAL EQUIPMENT</b>		
Optional Butt Saw		
Maximum cut diameter (mm/in.)		
Length of saw bar (mm/in.)		
Optional Top Saw		
Maximum cut diameter (mm/in.)		
Length of saw bar (mm/in.)		
No top saw		
Continuous 360-degree rotation		
Color marking		
Multi-tree harvesting		
Multi-tree processing		
Fabricated processing upper delimb arms		
Cast processing upper delimb arms		
Harvesting (CTL) upper delimb arms		
MenSe feed rollers		
Debarking feed rollers		
Steel thumbnail feed rollers		
Alpine		
Non-aggressive fixed roller		
Steel ribbed feed rollers		





FORESTRY EQUIPMENT

[www.Waratah.com](http://www.Waratah.com)

