

HARVESTING/PROCESSING AND FELLING HEADS



600 SERIES





It's no coincidence that Waratah has been an industry-leader for over 45 years. Because we've always listened to you to design durable, more productive and efficient harvesting and processing heads proven for your application.

At our facilities in Finland and New Zealand, each head is made to order, so you get exactly what you need. Our heads are built to work with advanced technology providing precise control with accurate diameter and length measuring. With on-site facility testing, each product is proven on our time to be profitable on yours.

Our commitment to your success goes beyond product quality. When you put our heads to work, our global support network goes to work for you – from helping you choose the right head, to installation and startup, to being on site when you need us.

We offer the widest range of harvester/processor heads on the market. So whether you're harvesting at the stump, processing at the landing or somewhere in between, Waratah is built to work for you all over the world.



"Our Waratah helps us get all the monetary value out of every piece of wood."

Kevin Harrison
President, Harrison Logging



600 SERIES

**Proven in hardwood and softwood applications,
Waratah 600-Series harvesters balance toughness with precision.**

**Continuous 360-degree rotation
with clean through-nose and
from-the-side hose configurations**

**Advanced on-board
controller and diagnostics**

**Heavy-duty
steel frames**

**Laser find-end
log alignment**

**Hardened alloy long-lasting steel
pins with split nut pin retention**

**Single or twin lower
delimb options**

**Powerful feed motors appropriately sized
for best feeding performance**

**High-torque main saw motors with
auto-chain tension for long service life and
available in .404 or 3/4" pitch configurations**

**Rugged saw box designed for
multiple logs, butt flare and low
stump heights when harvesting**

**Three- or four-wheel synchronized
drive configurations with log shuffling in
four-wheel drive multi-stem applications**



High load-bearing hanging bracket and rotator

High performance and efficient valves

Easy to service and well-protected hydraulics

Accurate length measuring in single- or multi-stem applications with many optional wheel styles

Standard top saws in .404 or 3/4" pitch

Optional floating or fixed heavy-duty front knives

Advanced delimber geometry for fast picking and stem catching

Heavy-duty cast and fabricated delimb arms with wear-resistant replaceable knife inserts

Proportional soft clamping for delimb and drive arms for less friction and fuel burn

Feed wheel options to suit any application



HTH616C SERIES-III

Featuring a highly efficient valve and extensive optionality, the versatile HTH616C Series-III is performance-ready for productivity on wheeled or tracked carriers.

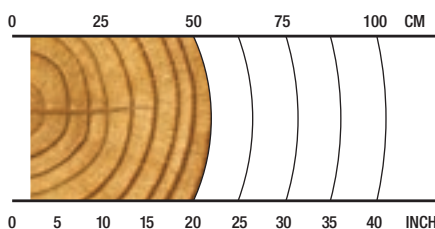
OVERVIEW

Harvesting in early-to-late thinnings; productive processing or debarking.

APPLICATIONS

Hardwood harvesting/processing
Softwood harvesting/processing
Debarking
Early thinnings
Late or final thinnings/clear felling

RECOMMENDED RANGE



5-51 cm / 2-20 in.

SPECS



1800 kg / 3,968 lb.

From; Without Rotator and Link

2000 kg / 4,409 lb.

From; Without Link; Std. Rotator Net Weight



35 MPa / 5,076 psi

Max Hydraulic Pressure



660 mm / 26 in.

Max Delimb Opening



680 mm / 27 in.

Max Feed Roller Opening



550 mm / 22 in.

Max Sawing Capacity



20+ metric ton

Carrier Size



20-30 metric ton

Carrier Size



HTH618C SERIES-III

When it comes to a high performing thinning head, the agile HTH618C Series-III is perfectly equipped. Its responsive valve and twin lower delimb arms provide superior delimbing in a durable and compact design.

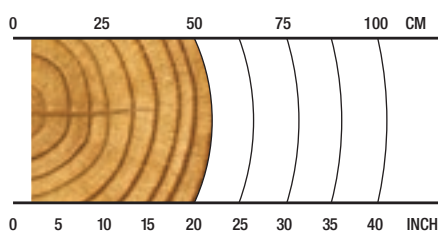
OVERVIEW

Harvesting in early-to-late thinnings;
productive processing or debarking.

APPLICATIONS

Hardwood harvesting/processing
Softwood harvesting/processing
Debarking
Early to late thinnings/clear felling

RECOMMENDED RANGE



5-51 cm / 2-20 in.

SPECS



2300 kg / 5,071 lb.
Net Weight



35 MPa / 5,076 psi
Max Hydraulic Pressure



660 mm / 26 in.
Max Delimb Opening



680 mm / 27 in.
Max Feed Roller Opening



550 mm / 22 in.
Maximum Sawing Capacity



22-30 metric ton
Carrier Size



HTH622B SERIES-III

You spoke. We listened. And then we made our all-time leader, the 622B, better than ever. The HTH622B Series-III delivers increased productivity, improved feeding and sawing performance. It's ready for your toughest jobs, and it's simplified to make maintenance a breeze.

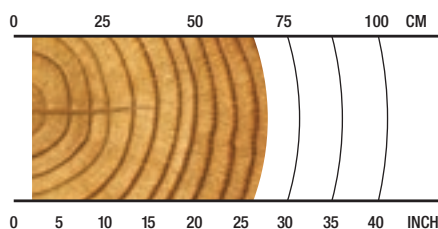
OVERVIEW

Harvesting in late thinnings or final harvesting of large timber (head-appropriate), hardwood or softwood; some debarking.

APPLICATIONS

Hardwood harvesting/processing
Softwood harvesting/processing
Debarking
Multi-tree harvesting
Early thinnings
Late or final thinnings/clear felling

RECOMMENDED RANGE



5-66 cm / 2-26 in.

SPECS



2450 kg / 5,401 lb.
Net Weight



35 MPa / 5,076 psi
Max Hydraulic Pressure



650 mm / 26 in.
Max Delimb Opening



730 mm / 29 in.
Max Feed Roller Opening



750 mm / 30 in.
Maximum Sawing Capacity



24-30 metric ton
Carrier Size



HTH622C 4x4

The HTH622C 4X4 takes productivity and efficiency to a higher level with capabilities including multi-tree processing and independent log shuffling – minimizing waste and maximizing your profits.

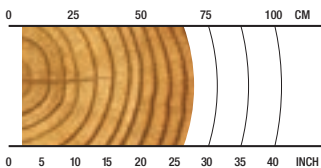
OVERVIEW

Processing of large diameter timber from log deck; harvesting in late thinnings; final felling of large timber (head appropriate).

APPLICATIONS

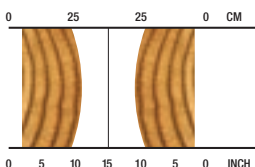
Hardwood harvesting/processing
Softwood harvesting/processing
Shovel logging
Late or final thinnings/clear felling
Multi-tree processing

SINGLE STEM RECOMMENDED RANGE



5-66 cm / 2-26 in.

MULTI-STEM RECOMMENDED RANGE (2 LOGS)



5-28 cm / 2-11 in.

SPECS



2760 kg / 6,085 lb.
Net Weight



35 MPa / 5,076 psi
Max Hydraulic Pressure



650 mm / 26 in.
Max Delimb Opening



780 mm / 31 in.
Max Feed Roller Opening



750 mm / 30 in.
Maximum Sawing Capacity



25-35 metric ton
Carrier Size



HTH623C

Productivity abounds with this over-achiever. The perfect match to a 25-ton carrier, the HTH623C provides exceptional power to weight in its proven durable design – achieving supreme feeding speeds, log control and agility – making short work of the toughest applications.

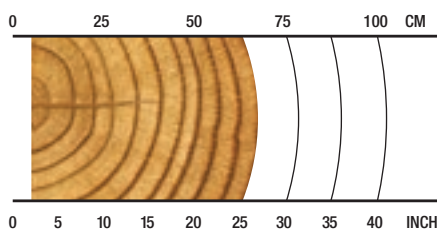
OVERVIEW

Harvesting in late thinnings;
final felling of large timber
(head-appropriate), hardwood
or softwood; some debarking.

APPLICATIONS

Hardwood harvesting/processing
Softwood harvesting/processing
Debarking
Shovel logging
Late or final thinnings/clear felling

RECOMMENDED RANGE



5-69 cm / 2-27 in.

SPECS



3040 kg / 6,702 lb.
Net Weight



35 MPa / 5,076 psi
Max Hydraulic Pressure



700 mm / 28 in.
Max Delimb Opening



875 mm / 34 in.
Max Feed Roller Opening



750 mm / 30 in.
Maximum Sawing Capacity



25-34 metric ton
Carrier Size



HTH623C LP

With a shorter tilt frame providing improved reach for higher deck piles, the HTH623C LP is a multi-use head built to work in tight spaces. Its large delimb opening allows for grabbing multiple logs or larger single logs, which increases efficiency and productivity for clearing the chute and loading trucks.

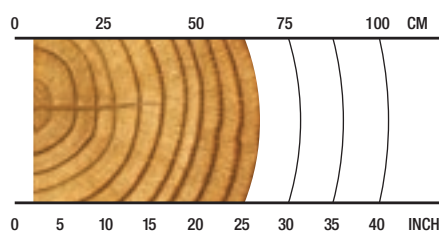
OVERVIEW

Processing roadside; processing under a yarder, clearing the chute; loading and processing where equipment or space is limited.

APPLICATIONS

Processing
Loading/processing
Shovel logging

RECOMMENDED RANGE



5-69 cm / 2-27 in.

SPECS



3140 kg / 6,923 lb.
Net Weight



35 MPa / 5,076 psi
Max Hydraulic Pressure



939 mm / 37 in.
Max Delimb Opening



875 mm / 34 in.
Max Feed Roller Opening



750 mm / 29 in.
Maximum Sawing Capacity



25-34 metric ton
Carrier Size



HTH624C

Work confidently with the rugged and reliable HTH624C. Equipped with a premium valve, this highly productive processor cuts through any challenges – including big timber.

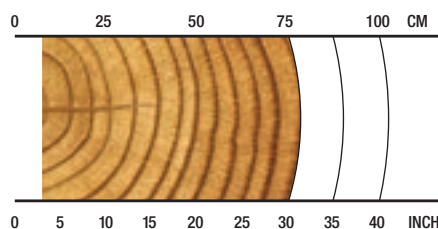
OVERVIEW

Harvesting in late thinnings;
final felling of large timber
(head-appropriate), hardwood
or softwood.

APPLICATIONS

Hardwood harvesting/processing
Softwood harvesting/processing
Shovel logging
Late or final thinnings/clear felling

RECOMMENDED RANGE



8-76 cm / 3-30 in.

SPECS



3530 kg / 7,782 lb.
Net Weight



35 MPa / 5,076 psi
Max Hydraulic Pressure



760 mm / 30 in.
Max Delimb Opening



850 mm / 34 in.
Max Feed Roller Opening



820 mm / 32 in.
Maximum Sawing Capacity



30+ metric ton
Carrier Size



HTH624C 4x4

Perfectly suited for 27+ metric-ton machines, this four-wheel drive, four-roller head is equally comfortable single stemming large logs or multi-stemming on-demand. Known for exceptional agility and log handling for its size, a large cutting capacity and outstanding traction, the HTH624C 4x4 boosts productivity in demanding applications.

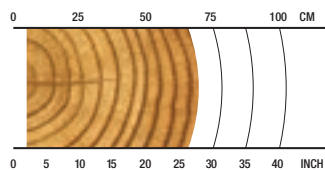
OVERVIEW

Harvesting in late thinnings;
final felling of large timber
(head-appropriate), hardwood
or softwood.

APPLICATIONS

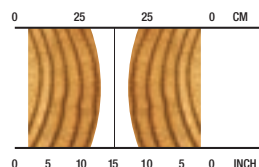
Hardwood harvesting/processing
Softwood harvesting/processing
Shovel logging
Late or final thinnings/clear felling

SINGLE STEM RECOMMENDED RANGE



5-71 cm / 2-28 in.

MULTI-STEM RECOMMENDED RANGE (2 LOGS)



5-33 cm / 2-13 in.

SPECS



3560 kg / 7,848 lb.
Net Weight



35 MPa / 5,076 psi
Max Hydraulic Pressure



710 mm / 28 in.
Max Delimb Opening



875 mm / 34 in.
Max Feed Roller Opening



820 mm / 32 in.
Maximum Sawing Capacity



27+ metric ton
Carrier Size



HTH624C 4x4 LP

With four-wheel-drive, the versatile HTH624C 4x4 LP is built for exceptional delimbing, log handling and productivity. A shorter tilt frame permits loading trucks and improved reach for higher deck piles. Plus, the large delimb capacity allows operators to grab multiple logs clearing the yarder chute, shovel or manipulate larger single logs.

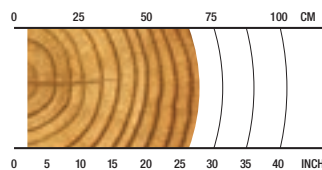
OVERVIEW

Processing roadside; processing under a yarder, clearing the chute; loading and processing where equipment or space is limited.

APPLICATIONS

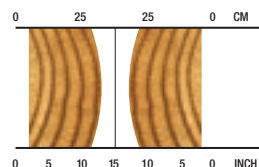
Processing
Loading/processing
Shovel logging

SINGLE STEM RECOMMENDED RANGE



5-71 cm / 2-28 in.

MULTI-STEM RECOMMENDED RANGE (2 LOGS)



5-33 cm / 2-13 in.

SPECS



3560 kg / 7,848 lb.
Net Weight



35 MPa / 5,076 psi
Max Hydraulic Pressure



939 mm / 37 in.
Max Delimb Opening



875 mm / 34 in.
Max Feed Roller Opening



815 mm / 32 in.
Maximum Sawing Capacity



27+ metric ton
Carrier Size



HTH625C

The aggressive HTH625C optimizes productivity with impressive log control. This high-performer flies through timber with great log handling with twin lower delimb arms.

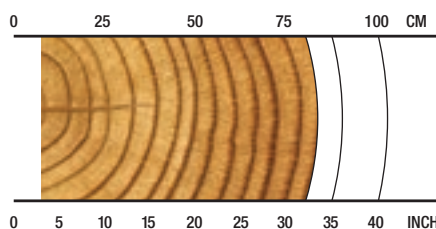
OVERVIEW

Harvesting in late thinnings;
final felling of large timber
(head-appropriate), hardwood
or softwood.

APPLICATIONS

Hardwood harvesting/processing
Softwood harvesting/processing
Shovel logging
Late or final thinnings/clear felling

RECOMMENDED RANGE



8-81 cm / 3-32 in.

SPECS



4390 kg / 9,678 lb.
Net Weight



35 MPa / 5,076 psi
Max Hydraulic Pressure



800 mm / 31 in.
Max Delimb Opening



850 mm / 34 in.
Max Feed Roller Opening



900 mm / 35 in.
Maximum Sawing Capacity



35+ metric ton
Carrier Size



HTH626 SERIES-II

Large timber is no match for the tough HTH626 Series II, specifically designed to dominate large-diameter wood for felling, delimbing and processing.

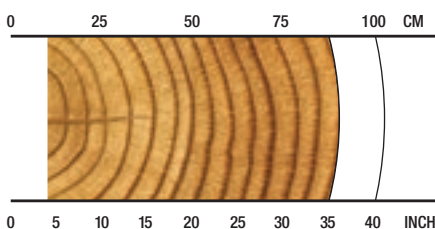
OVERVIEW

Final felling or harvesting of large timber; optimum delimbing force.

APPLICATIONS

Softwood harvesting/processing
Shovel logging
Late or final thinnings/clear felling

RECOMMENDED RANGE



10-88 cm / 4-35 in.

SPECS



4850 kg / 10,692 lb.
Net Weight



35 MPa / 5,076 psi
Max Hydraulic Pressure



900 mm / 35 in
Max Delimb Opening



980 mm / 39 in.
Max Feed Roller Opening



860 mm / 34 in.
Maximum Sawing Capacity



35+ metric ton
Carrier Size

TimberRite™ X-20



The FL100's TimberRite™ X-20 system is Waratah's next generation felling head controller adaptable to any make of carrier. It features a new 7 in. display, trigger-style joysticks, and expanded operational capabilities, and configurable settings for customized felling head operation for any application. Some features include a stem counter, saw cut/home indication, tilt lock and on-board diagnostics. The TimberRite X-20 enhances the operational experience and provides more flexibility for any application to get the job done.



FL100

Unmatched strength plus versatility. Meet the FL100. This bonafide jack-of-all-trades owns the steepest of slopes and shovels the heaviest of timber, all while getting better logs to the landing. Simply put, it's a beast. And truly Built to Work®.

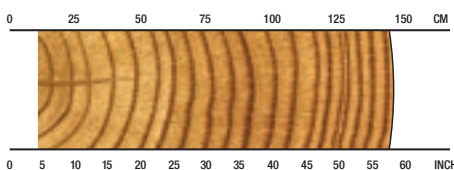
OVERVIEW

Thinnings, steep slope, shovel logging/hoe-chucking, topping, storm damage, clean-up.

APPLICATIONS






Shovel logging
Late or final thinnings/clear felling
Topping
Storm damage
Steep slope

RECOMMENDED RANGE



11-147 cm / 4.3-57.9 in.

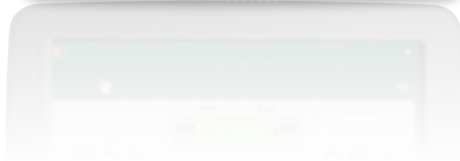
SPECS

-  **2995 kg / 6,600 lb.**
Net Weight
-  **35 MPa / 5,076 psi**
Max Hydraulic Pressure
-  **1470 mm / 57.8 in.**
Max Grapple Opening
-  **1000 mm / 39.3 in.**
Maximum Sawing Capacity
-  **30+ metric ton**
Carrier Size

MEASURING AND CONTROL SYSTEMS

We focus on providing you with accurate diameter and length measuring systems for profitable precision. Simplify operations and boost productivity with real-time statistics and measuring information, and wireless data transfer.

TIMBERRITE™ H-16



Imagine a fast, powerful control system that manages your workload and links your office to the forest.

The productive TimberRite measuring and control system uses a powerful Windows PC, providing accurate measuring technology and responsive head control for efficient operational productivity.

It records production information, tracks productivity, and packages all files in the latest StanForD 2010 format to ensure data interchanges with virtually any professional system in the forest industry.

Additionally, this user-friendly system has email capabilities, and can utilize our WaratahMate™ smartphone app for the efficient and timely transfer of production information and other important files regardless of your location. Configurable as standard with Pre-Selection priority, or optionally with Value Optimization it can manage your output to keep step with market demands. TimberRite keeps you productive and informed to manage your workload for whatever your market requires.

KEY FEATURES

- **Onboard online mapping** - (optional) - access your location and visualize your production data.
- **Pre-Selection Priority** - (standard) - sequential optimization by cutting list instruction, and alternate log assignments.
- **Value Optimization** - (optional) - value-based optimization, intuitive prognosis through intelligent assessment of advanced matrices.
- **Touch-screen display**, or wireless keyboard and touch pad mouse.
- **Windows™ PC** - based controller integrates the harvester head measuring and control system with the high processing power of a personal computer.
- **StanForD 2007 or 2010** file structure compatibility ensures data interchanges with other professional systems in the forest industry.
- **Email and automatic file sending** - production reports, worksite instructions, repair follow-ups, calibration history, log tables, machine settings and harvesting instructions.
- **Telematics options using optional onboard solutions or WaratahMate™ smartphone app** - Easily transfer data wirelessly regardless of location, or through email via phone USB.
- **Work & repair statistics** - Monitor uptime, productivity and operating costs.
- **Species specific calibration and soft-clamping** settings for delimb and drive arms.
- **Operator specific settings** and configurable menus for quick navigation and adjustments.
- **Extensive site documentation** - expanded site, contractor, and machine information.
- **Simplified diagnostics** - input and output tests with built-in diagnostic troubleshooting assistance.

OPTIONS

Waratah heads are configurable to your application.
Consult your dealer for option availability.



Configurability

Waratah has a wide range of focused options for harvesting and processing applications including single- and multi-stem processing, multi-tree handling, and all models include options for softwood, crooked hardwood and debarking.



Color Marking

Waratah offers nozzle-applied color marking systems to simplify log identification. Three colors provide many assortment combinations to either the small or large ends, improving sorting and yard safety.



Main Saws, Saw Motors, Top Saws

The 600 series have high-cutting capacity main saws for extra productivity in large wood. Select models have .404 and 3/4" pitch chain options; all main saws include auto chain tensioning and are driven by durable and efficient high torque saw motors. The top saws increase productivity in any processing and crooked wood applications and are standard equipment on all 600 series models.



Measuring Wheels

Application-specific measuring wheels are engineered for accurate and consistent measuring in all tree species with enhancements for log quality. Selections include wide and narrow models, coarse and fine teeth options, and multi-stem, debarking configurations.



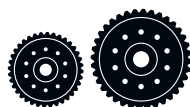
Delimb Arms

Select models can be configured for more productivity and log quality enhancements with specific harvesting or processing upper delimb arms, and single or twin lower delimb options. All have durable, pre-formed hardened steel replaceable knife inserts.



Rotators

Waratah offers a productive 360-degree continuous rotation on all of the 600 series models, with options of hoses through the rotate unit or from the side. It assures a cleaner look and more uptime. Also included are options of non-continuous 320-degree and Indexator brand options on select models.



Feed Rollers

Many feed roller options are available for a variety of applications, offering improved traction and reducing fiber damage. Wheel options include eucalyptus debarking, bar, thumbnail, alpine, rubber and non-aggressive styles.



Multi-tree Handling

Select models have multi-tree handling (MTH) capabilities, providing superior accumulating and precise bundle feeding with the option. MTH ability increases productivity and can easily be installed between the rotator and hanging bracket – even on existing heads.



Front Knives

Waratah offers heavy-duty floating or fixed front knife options with specialized profiles and cutting edges for superior delimbing in any application.



Stump Treatment

Stump treatment kits available for select models.

Talk to your Waratah dealer about more available options.

TECHNICAL DATA

600 SERIES

	HTH616C SERIES-III	HTH618C SERIES-III	HTH622B SERIES-III
DIMENSIONS			
Width, head open (mm/in.)	1600 / 63	1600 / 63	1700 / 67
WEIGHT			
Excluding link and some options (kg/lb.)	1800 / 3,968	2300 / 5,071	2450 / 5,401
ROTATION			
	360 continuous or 320 degree	360 continuous	360 continuous
DELIMBING			
Delimbing knives	1 fixed front, 2 moving*, 1 fixed rear (*option for single lower delimb)	1 fixed front, 4 moving, 1 fixed rear	1 fixed/floating, 2 moving, 1 fixed rear
Lower delimb (standard/option, (qty))	option, 1	standard, 2	
Maximum delimb opening processing arms or felling head grapple opening (mm/in.)	660 / 26	660 / 26	650 / 26
Maximum delimb opening CTL arms (mm/in.)	685 / 27	685 / 27	
Maximum opening lower knives (mm/in.)	650 / 26	650 / 26	
DRIVE			
Quantity drive rollers	3	3	3
Motor cc - option 1 (drive, fixed)	(500, 315)	(500, 315)	(702, 400)
Maximum feed speed - option 1 (m/s, ft/s)	8.3 / 27	8.3 / 27	6.5 / 21.3
Motor cc - option 2 (drive, fixed)	(630, 400)	(630, 400)	
Maximum feed speed - option 2 (m/s, ft/s)	6.6 / 21.6	6.6 / 21.6	
Motor cc - option 3 (drive, fixed)	(800, 500)	(800, 500)	
Maximum feed speed - option 3 (m/s, ft/s)	5.2 / 17	5.2 / 17	
Maximum roller opening (mm/in.)	680 / 27	680 / 27	730 / 29
Minimum feed arm diameter (mm/in.)	50 / 2	50 / 2	50 / 2
TOP SAW			
Maximum cut diameter (mm/in.)	320 / 13	320 / 13	400 / 16
Length of saw bar (mm/in.)	420 / 17	420 / 17	640 / 25
Chain type (in.)	0.404	0.404	0.404
Top saw motor displacement	10 cc	10 cc	10 cc
BUTT / FELLING SAW			
Standard Saw	SC100	Waratah AT 3/4"	SC100
Maximum cut diameter (mm/in.)	550 / 22	550 / 22	750 / 29.5
Length of saw bar (mm/in.)	750 / 29	750 / 29	820 / 32
Chain type (in.)	0.404	3/4"	0.404
Saw motor	3/4" - 45 cc & .404 - 20 cc	45 cc	3/4" - 50 cc & .404 - 20 cc
Oil tank capacity (L/gal.)	10 / 2.6	10 / 2.6	12 / 3.2
CARRIER RANGE			
Metric tons	20-30 metric tons	22-30 metric tons	24-30 metric tons
HYDRAULIC SYSTEM			
Maximum operating pressure (MPa/psi)	35 / 5,076	35 / 5,076	35 / 5,076
Maximum pump capacity (L/min., gal./min.)	320-360 / 85-95	320-360 / 85-95	320-360 / 85-95
CONTROL AND MEASURING SYSTEM			
	TimberRite H-16	TimberRite H-16	TimberRite H-16
OPTIONAL EQUIPMENT			
Optional Butt Saw	Waratah AT 3/4"	SC100	Waratah AT 3/4"
Maximum cut diameter (mm/in.)	550 / 22	550 / 22	750 / 30
Length of saw bar (mm/in.)	740 / 29	750 / 29	820 / 32
Optional Top Saw			
Maximum cut diameter (mm/in.)			
Length of saw bar (mm/in.)			
No top saw	yes	yes	yes
Continuous 360-degree rotation	yes	yes	yes
Color marking	yes	yes	yes
Stump spray	yes	yes	inquire
Multi-tree harvesting (*320 degree rotation only)	no	no	no
Multi-tree processing	no	no	no
Fabricated processing upper delimb arms	yes	no	no
Cast processing upper delimb arms	yes	yes	yes
Cast Harvesting (CTL) upper delimb arms	yes	yes	no
Debarking feed rollers	yes	yes	yes
Steel thumbnail feed rollers	yes	yes	yes
Alpine	yes	yes	yes
Non-aggressive fixed roller	no	no	yes
Steel ribbed feed rollers	no	no	yes
Optional lower delimb	yes	no	no
Optional rotators	yes	no	no
Second Diameter sensor	yes	yes	no
Find End Sensor	yes	yes	yes
Harvesting guarding	yes	yes	yes
Snow hole guarding	yes	yes	yes
Pressure sensors (M, CD, T)	yes	yes	yes

This brochure has been compiled with care for worldwide circulation. While general information, pictures and descriptions are provided, some illustrations and text may include options and accessories not available in all regions. Please contact your local dealer for details. Waratah reserves the right to change specifications and design for products described in this brochure without notice. No liability for errors and omissions.

	HTH622C 4x4	HTH623C	HTH623C LP	HTH624C
DIMENSIONS				
Width, head open (mm/in.)	1820 / 72	2000 / 79	2000 / 79	2000 / 79
WEIGHT				
Excluding link and some options (kg/lb.)	2760 / 6,085	3040 / 6,702	3140 / 6,923	3530 / 7,782
ROTATION				
	360 continuous	360 continuous	360 continuous	360 continuous
DELIMBING				
Delimbing knives	1 fixed/floating, 2 moving, 1 fixed rear	1 fixed/floating, 2 moving*, 1 fixed rear (*option for single lower delimb)	1 fixed/floating, 2 moving, 1 fixed rear	1 floating, 2 moving, 1 fixed rear
Lower delimb (standard/option, (qty))		option, 1		
Maximum delimb opening processing arms or felling head grapple opening (mm/in.)	650 / 26	700 / 28	939 / 37	760 / 30
Maximum delimb opening CTL arms (mm/in.)				700 / 27.5
Maximum opening lower knives (mm/in.)		885 / 35	885 / 35	
DRIVE				
Quantity drive rollers	4	3	3	3
Motor cc - option 1 (drive, fixed)	(702,400)	(837,500)	(837,500)	(1048,630)
Maximum feed speed - option 1 (m/s, ft/s)	6.5 / 21	5.2 / 17	5.2 / 17	4.6 / 15.2
Motor cc - option 2 (drive, fixed)		(1048,630)	(1048,630)	
Maximum feed speed - option 2 (m/s, ft/s)		4.6 / 15.1	4.6 / 15.1	
Motor cc - option 3 (drive, fixed)				
Maximum feed speed - option 3 (m/s, ft/s)				
Maximum roller opening (mm/in.)	780 / 31	875 / 34	875 / 34	850 / 33
Minimum feed arm diameter (mm/in.)	50 / 2	65 / 2.6	65 / 2.6	80 / 3
TOP SAW				
Maximum cut diameter (mm/in.)	400 / 16	450 / 18	450 / 18	500 / 20
Length of saw bar (mm/in.)	640 / 25	590 / 23	590 / 23	750 / 29.5
Chain type (in.)	0.404	0.404	0.404	0.404
Top saw motor displacement	10 cc	19 cc	19 cc	20 cc
BUTT / FELLING SAW				
Standard Saw	Waratah AT 3/4	Waratah AT 3/4	Waratah AT 3/4	Waratah AT 3/4
Maximum cut diameter (mm/in.)	750 / 30	750 / 30	750 / 30	810 / 32
Length of saw bar (mm/in.)	900 / 35	900 / 35	900 / 35	965 / 38
Chain type (in.)	3/4"	3/4"	3/4"	3/4"
Saw motor	50 cc	45 cc	45 cc	50 cc
Oil tank capacity (L/gal.)	22 / 4.8	16 / 4.2	16 / 4.2	16 / 4.2
CARRIER RANGE				
Metric tons	25-35 metric tons	25-34 metric tons	25-34 metric tons	30+ metric tons
HYDRAULIC SYSTEM				
Maximum operating pressure (MPa/psi)	35 / 5,076	35 / 5,076	35 / 5,076	35 / 5,076
Maximum pump capacity (L/min., gal./min.)	320-360 / 85-95	320-360 / 85-95	320-360 / 85-95	320-360 / 85-95
CONTROL AND MEASURING SYSTEM	TimberRite H-16	TimberRite H-16	TimberRite H-16	TimberRite H-16
OPTIONAL EQUIPMENT				
Optional Butt Saw	SC100			
Maximum cut diameter (mm/in.)	750 / 29.5			
Length of saw bar (mm/in.)	900 / 35.4			
Optional Top Saw				Waratah 3/4"
Maximum cut diameter (mm/in.)				500 / 20
Length of saw bar (mm/in.)				715 / 28
No top saw	no	yes	yes	yes
Continuous 360-degree rotation	yes	yes	yes	yes
Color marking	no	yes	yes	yes
Stump spray	no	inquire	inquire	no
Multi-tree harvesting	no	no	no	no
Multi-tree processing	yes	no	no	no
Fabricated processing upper delimb arms	yes	yes	yes	no
Cast processing upper delimb arms	yes	yes	yes	yes
Harvesting (CTL) upper delimb arms	no	no	no	no
Debarking feed rollers	yes	yes	yes	no
Steel thumbnail feed rollers	yes	yes	yes	yes
Alpine	yes	yes	yes	yes
Non-aggressive fixed roller	no	yes	yes	no
Steel ribbed feed rollers	no	no	no	no
Optional lower delimb	no	yes	yes	no
Optional rotators	no	no	no	no
Second Diameter sensor	std	no	no	no
Find End Sensor	yes	yes	yes	yes
Harvesting guarding	no	no	no	no
Snow hole guarding	yes	yes	yes	yes
Pressure sensors (M, CD, T)	yes	yes	yes	yes

	HTH624C 4x4	HTH624C 4x4 LP	HTH625C
DIMENSIONS			
Width, head open (mm/in.)	2000 / 79	2000 / 79	2000 / 79
WEIGHT			
Excluding link and some options (kg/lb.)	3560 / 7,848	3560 / 7,848	4390 / 9,678
ROTATION			
	360 continuous	360 continuous	360 continuous
DELIMBING			
Delimbing knives	1 fixed,/1 floating, 2 moving*, 1 fixed rear (*option for single lower delimb) option, 1	1 fixed,/1 floating, 2 moving*, 1 fixed rear (*option for single lower delimb) option, 1	1 floating, 2 moving
Lower delimb (standard/option, (qty))			standard, 2
Maximum delimb opening processing arms or felling head grapple opening (mm/in.)	710 / 28	939 / 37	800 / 31
Maximum delimb opening CTL arms (mm/in.)			
Maximum opening lower knives (mm/in.)	885 / 35	885 / 35	885 / 35
DRIVE			
Quantity drive rollers	4	4	3
Motor cc - option 1 (drive, fixed)	(837,500)	(837,500)	(1395,800)
Maximum feed speed - option 1 (m/s, ft/s)	5.2 / 17	5.2 / 17	3.5 / 11.4
Motor cc - option 2 (drive, fixed)	(1048,630)	(1048,630)	
Maximum feed speed - option 2 (m/s, ft/s)	4.6 / 15.1	4.6 / 15.1	
Motor cc - option 3 (drive, fixed)			
Maximum feed speed - option 3 (m/s, ft/s)			
Maximum roller opening (mm/in.)	875 / 34	875 / 34	850 / 34
Minimum feed arm diameter (mm/in.)	65 / 2.6	65 / 2.6	80 / 3
TOP SAW			
Maximum cut diameter (mm/in.)	560 / 22	560 / 22	500 / 20
Length of saw bar (mm/in.)	740 / 29	740 / 29	715 / 28
Chain type (in.)	3/4"	3/4"	3/4"
Top saw motor displacement	20 cc	20 cc	20 cc
BUTT / FELLING SAW			
Standard Saw	Waratah AT 3/4	Waratah AT 3/4	Waratah AT 3/4
Maximum cut diameter (mm/in.)	815 / 32	815 / 32	900 / 35
Length of saw bar (mm/in.)	1015 / 40	1015 / 40	1020 / 40
Chain type (in.)	3/4"	3/4"	3/4"
Saw motor	50 cc	50 cc	50 cc
Oil tank capacity (L/gal.)	16 / 4.2	16 / 4.2	22 / 5.8
CARRIER RANGE			
Metric tons	27+ metric tons	27+ metric tons	30+ metric tons
HYDRAULIC SYSTEM			
Maximum operating pressure (MPa/psi)	35 / 5,076	35 / 5,076	35 / 5,076
Maximum pump capacity (L/min.,gal./min.)	320-360 / 85-95	320-360 / 85-95	320-360 / 85-95
CONTROL AND MEASURING SYSTEM			
OPTIONAL EQUIPMENT			
Optional Butt Saw			
Maximum cut diameter (mm/in.)			
Length of saw bar (mm/in.)			
Optional Top Saw			
Maximum cut diameter (mm/in.)	Waratah 0.404	Waratah 0.404	Waratah 0.404
Length of saw bar (mm/in.)	560 / 22	560 / 22	500 / 20
	820 / 32	820 / 32	750 / 30
No top saw	no	no	no
Continuous 360-degree rotation	yes	yes	yes
Color marking	no	no	yes
Stump spray	no	no	no
Multi-tree harvesting	no	no	no
Multi-tree processing	yes	yes	no
Fabricated processing upper delimb arms	yes	no	yes
Cast processing upper delimb arms	yes	yes	no
Harvesting (CTL) upper delimb arms	no	no	no
Debarking feed rollers	no	no	no
Steel thumbnail feed rollers	yes	yes	yes
Alpine	yes	yes	yes
Non-aggressive fixed roller	yes	yes	no
Steel ribbed feed rollers	no	no	no
Optional lower delimb	yes	yes	no
Optional rotators	no	no	no
Second Diameter sensor	no	no	no
Find End Sensor	yes	yes	yes
Harvesting guarding	no	no	no
Snow hole guarding	yes	yes	yes
Pressure sensors (M, CD, T)	yes	yes	yes

This brochure has been compiled with care for worldwide circulation. While general information, pictures and descriptions are provided, some illustrations and text may include options and accessories not available in all regions. Please contact your local dealer for details. Waratah reserves the right to change specifications and design for products described in this brochure without notice. No liability for errors and omissions.

	HTH626 SERIES-II	FL100
DIMENSIONS		
Width, head open (mm/in.)	2200 / 87	2270 / 89.4
WEIGHT		
Excluding link and some options (kg/lb.)	4850 / 10,692	2995 / 6600
ROTATION		
	360 continuous	360 continuous, 2 motors
DELIMBING		
Delimbing knives	1 floating, 2 moving	
Lower delimb (standard/option, (qty))		
Maximum delimb opening processing arms or felling head grapple opening (mm/in.)	900 / 35	1470 / 57.8
Maximum delimb opening CTL arms (mm/in.)		
Maximum opening lower knives (mm/in.)		
DRIVE		
Quantity drive rollers	3	
Motor cc - option 1 (drive, fixed)	(1395,800)	
Maximum feed speed (m/s, ft/s)	3.5 / 11.4	
Motor cc - option 2 (drive, fixed)		
Maximum feed speed - option 2 (m/s, ft/s)		
Motor cc - option 3 (drive, fixed)		
Maximum feed speed - option 3 (m/s, ft/s)		
Maximum roller opening (mm/in.)	980 / 39	
Minimum feed arm diameter (mm/in.)		
TOP SAW	100 / 4	
Maximum cut diameter (mm/in.)		
Length of saw bar (mm/in.)	400 / 16	
Chain type (in.)	590 / 23	
Top saw motor displacement	0.404	
BUTT / FELLING SAW	19 cc	
Standard Saw		
Maximum cut diameter (mm/in.)	Waratah AT 3/4	1000 / 39
Length of saw bar (mm/in.)	860 / 34	1140 / 45
Chain type (in.)	960 / 38	3/4"
Saw motor	3/4"	50 cc
Oil tank capacity (L/gal.)	50 cc	35 / 9.25
CARRIER RANGE	25 / 6.6	
Metric tons		30+ metric tons
HYDRAULIC SYSTEM	35+ metric tons	
Maximum operating pressure (MPa/psi)		35 / 5,076
Maximum pump capacity (L/min.,gal./min.)	35 / 5,076	300 / 79
CONTROL AND MEASURING SYSTEM	320-360 / 85-95	TimberRite X-20
OPTIONAL EQUIPMENT	TimberRite H-16	
Optional Butt Saw		
Maximum cut diameter (mm/in.)		
Length of saw bar (mm/in.)		
Optional Top Saw		
Maximum cut diameter (mm/in.)		
Length of saw bar (mm/in.)		
No top saw	yes	
Continuous 360-degree rotation	yes	
Color marking	yes	
Multi-tree harvesting	no	
Multi-tree processing	no	
Fabricated processing upper delimb arms	no	
Cast processing upper delimb arms	yes	
Harvesting (CTL) upper delimb arms	no	
MenSe feed rollers	no	
Debarking feed rollers	yes	
Steel thumbnail feed rollers	no	
Alpine	yes	
Non-aggressive fixed roller	no	
Steel ribbed feed rollers	no	
Optional lower delimb	no	
Optional rotators	no	
Second Diameter sensor	no	
Find End Sensor	yes	
Harvesting guarding	no	
Snow hole guarding	yes	
Pressure sensors (M, CD, T)	yes	



FORESTRY EQUIPMENT

www.Waratah.com