



H427X

The tough H427X is purpose-built for tracked machine applications. With a standard, heavy-duty tilt frame and heavy-duty feed motor covers, this powerful head delivers durability for extreme harvesting.

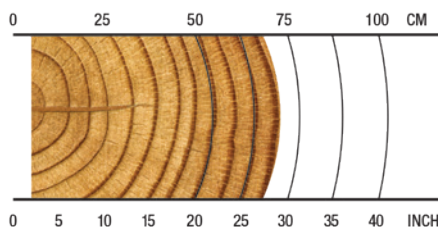
OVERVIEW

Harvesting in late thinnings; regeneration harvesting; tracked and wheeled machine applications.

APPLICATIONS

Softwood harvesting
Mixed stand (hardwood and softwood) harvesting
Multi-tree harvesting

RECOMMENDED RANGE



5-70 cm / 2-27.6 in.

SPECS



1853 kg / 4,085 lb.
Weight (With topsaw, HD tilt and feed motor covers)



28 MPa / 4,061 psi
35 MPa / 5,076 psi
Max Hydraulic Requirements



720 mm / 28.3 in.
Max Upper Delimb Opening



720 mm / 28.3 in.
Max Feed Roller Opening



760 mm / 29.9 in.
Max Cutting Capacity



18-25 metric ton
Carrier Size



20-30 metric ton
Carrier Size

SPECIFICATIONS

DIMENSIONS	
Width, head open (mm/in.)	1777 / 70
Width, head closed	1447 / 57
Height without rotator and link	1779 / 70
	1870 / 74 with top saw
WEIGHT	
With topsaw, HD tilt and feed motor covers (kg/lb.)	1853 / 4,085
DELIMBING	
Delimbing knives	4 moving, 2 fixed
Delimbing diameter, tip to tip (mm/in.)	490 / 19.2
Maximum opening, upper knives (mm/in.)	720 / 28.3
Maximum opening, lower knives (mm/in.)	800 / 31.5
DRIVE	
Quantity of drive rollers	4
Motor cc - option 1	500 / 780cc (single speed) (@ 350 bar)
Gross feed force - steel feed wheels (kN)	40
Motor cc - option 2	1014 / 507 / 315cc (multi-speed)
Gross feed force - steel feed wheels (kN)	42
Motor cc - option 3	1043 / 630cc (single speed)
Gross feed force - steel feed wheels (kN)	43
Maximum feed speed (m/s)	4.8, 3.6, 5.9
Maximum roller opening (mm/in.)	720 / 28.3
Minimum diameter (mm/in.)	50 / 2
TOP SAW	
Maximum cut diameter (mm/in.)	450 / 17.7
Length of saw bar (mm/in.)	670 / 26.4
Chain type (mm/in.)	10 / 0.404
Top saw motor displacement (cc)	14
	SuperCut 100S saw unit, automatic chain tensioning
BUTT / FELLING SAW	
Maximum cut diameter (mm/in.)	760 / 29.9
Length of saw bar (mm/in.)	900 / 35.4
Chain type (mm/in.)	10 / 0.404
Saw motor (cc)	32
Oil tank capacity (l)	14.3
CARRIER RANGE	
Wheeled (metric tons)	18-25
Tracked (metric tons)	20-30

SPECIFICATIONS

HYDRAULIC SYSTEM	
Maximum operating pressure (Mpa/PSI)	35 / 5,076
Recommended pump capacity (l/min., gal/min.)	260-370, 69-98
CONTROL AND MEASURING SYSTEM	
	TimberRite H-16
OPTIONAL EQUIPMENT	
Rotator options	
Hoses through junction box (direct hosing not available)	
Multi-tree handling (MTH) (not available with topsaw)	
Top saw	
IHC top delimbing knife	
Wide or classic top delimbing knife	
Processing knives	
Measuring wheels (four options: std, grooved, Euca/MTH & spike)	
Feed motors	
Feeding pressure 280/350 bar	
Feed wheels:	
V-type MTH	
Steel thumbnail	
Eucalyptus debarking	
Mense aggressive	
Steel ribbed	
Steel ribbed MTH	
Moipu aggressive	
Steel thumbnail hardwood	
Mense V-TEC	
Moipu extreme	
Saw bar and chain grease lubrication	
Chain and saw-bar kits	
Find-end sensor	
Hydraulic hose kit	
Color marking	
Snow protection	
Stump treatment (nozzles & through bar)	
Debarking options	
Uptime kit	