

# 624HX

As part of the all-new HX line, the new 624HX is faster, smarter and stronger than ever before. This powerhouse delivers impressive log picking, feeding and handling with unmatched uptime – taking your productivity to the extreme.

## OVERVIEW

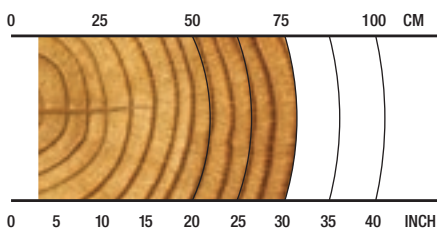
Harvesting, roadside or deck processing

## APPLICATIONS

Hardwood, softwood harvesting or processing

Late or final thinnings/clear felling

## RECOMMENDED RANGE



**8-76 cm / 3-30 in.**

## SPECS



**3990 kg / 8,796 lb.**  
Net Weight



**35 MPa / 5,076 psi**  
Max Hydraulic Pressure



**1025 mm / 40 in.**  
Max Delimb Opening



**1100 mm / 43 in.**  
Max Feed Roller Opening



**825 mm / 32.5 in.**  
Max Sawing Capacity



**35+ metric tons**  
Carrier Size



**SPECIFICATIONS**

<b>DIMENSIONS</b>	
Height, to boom pin (harvest position) (mm/in.)	3264 / 128.5
Width, head open (mm/in.)	2285 / 90
<b>WEIGHT</b>	
Base weight standard rotator, excluding link and some options (kg/lb.)	3990 / 8,796
<b>ROTATION</b>	
	360 continuous, stump treatment option
	Single or twin rotate option
<b>DELIMBING</b>	
Delimbing knives	1 fixed/floating front, 2 cast upper moving
Maximum delimb opening standard cast knives (mm/in.)	1025 / 40
Maximum delimb opening - wide cast knives (mm/in.)	1187 / 47 (option)
<b>DRIVE</b>	
Quantity of drive rollers	3
Motor cc - option 1 (drive, fixed)	1048, 630 (high speed)
Maximum feed speed - option 1 (m/s, ft/s)	5 / 16
Motor cc - option 2 (drive, fixed)	1395, 800 (high torque)
Maximum feed speed - option 2 (m/s, ft/s)	4 / 13
Maximum roller opening (mm/in.)	1100 / 43
Minimum feed arm diameter (mm/in.)	80 / 3.15
<b>TOP SAW</b>	
Type and pitch	Waratah 3/4" manual tension
	Saw prox std; transducer w/saw limit on AT - option
Maximum cut diameter (mm/in.)	560 / 22
Length of saw bar (mm/in.)	711 / 28
Chain type (in.)	3/4"
Top saw motor displacement	20cc std; 32cc - option
<b>MAIN/FELLING SAW</b>	
Type and pitch	Waratah auto-tension 3/4"
	Saw prox std; transducer w/saw limit on AT - option
Maximum cut diameter (mm/in.)	825 / 32.5
Length of saw bar (mm/in.)	1016 / 40
Chain type (in.)	3/4"
Saw motor	50cc (10t sprocket)
	63cc (11t sprocket) - option
Oil tank capacity (L/gal.)	22 / 5.8

**SPECIFICATIONS**

<b>HYDRAULIC SYSTEM</b>	
Maximum operating pressure (MPa/psi)	35 / 5,076
Maximum pump capacity (L/min., gal./min.)	400 / 106
Optimum flow (L/min., gal./min.)	360 @ 15 MPa / 95 @ 2,176 psi
<b>CARRIER RANGE</b>	
Tracked (metric tons)	35+
<b>CONTROL AND MEASURING SYSTEM</b>	
	TimberRite H-16
<b>OPTIONAL EQUIPMENT</b>	
Second rotator motor	
Fixed or floating top/front knife	
Optional top saw motor sizes	
Auto-tension topsaw	
Saw limit for topsaw (with AT unit)	
Optional main saw motor sizes	
High-capacity upper delimb	
Measuring wheel options (gear-cut coarse, serrated, shouldered)	
Debarking fixed, outer feed rollers	
Steel thumbnail fixed, outer feed rollers	
Non-aggressive fixed roller	
Alpine outer feed rollers	
Feed motors - high speed / high torque (see cc above)	
Second diameter sensor	
Find end sensor	
Cradle for common stick/dipper widths	
Converter pin	
Dog-bone link	
Color marking LED 1 color	
Color marking SED 3 color	
Color marking SED & LED	
Stump treatment (less tank and pump)	
Harvesting guarding	
Snow hole guarding	
Pressure sensors (M, CD, T)	
Carrier hydraulic filter kit	
Toolbox	
Uptime kit	

