



626HX

As part of the all-new HX line, the new 626HX is faster, smarter and stronger than ever before. This powerhouse redefines the legend, delivering impressive feeding and delimbing with unmatched uptime – taking your productivity to the extreme.

OVERVIEW

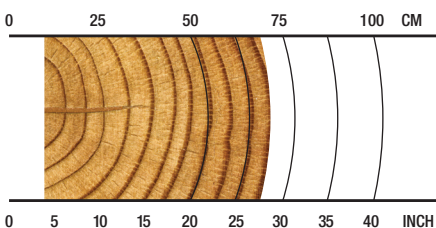
Harvesting, roadside or deck processing

APPLICATIONS

Hardwood, softwood harvesting or processing

Late or final thinnings/clear felling

RECOMMENDED RANGE



10-70 cm / 3.9-27.6 in.

SPECS



4600 kg / 10,141 lb.
Net Weight



35 MPa / 5,076 psi
Max Hydraulic Pressure



1080 mm / 41.7 in.
Max Delimb Opening



1100 mm / 43 in.
Max Feed Roller Opening



950 mm / 37.4 in.
Max Sawing Capacity



40+ metric tons
Carrier Size

SPECIFICATIONS**DIMENSIONS**

Height, to boom pin (harvest position) (mm/in.)	3400 / 134
Width, head open (mm/in.)	2310 / 91

WEIGHT

Base weight standard rotator, excluding link and some options (kg/lb.)	4600 / 10,141
--	---------------

ROTATION

360 continuous, stump treatment option
Single or twin rotate option

DELIMBING

Delimbing knives	1 fixed/floating front, 2 cast upper moving
Maximum delimb opening standard cast knives (mm/in.)	1080 / 41.7

DRIVE

Quantity of drive rollers	3
Motor cc - option 1 (drive, fixed)	1395, 800 (high torque)
Maximum feed speed - option 1 (m/s, ft/s)	4 / 13
Maximum roller opening (mm/in.)	1100 / 43
Minimum feed arm diameter (mm/in.)	80 / 3.15

TOP SAW

Type and pitch	Waratah 3/4" manual tension
	Saw prox std; transducer w/saw limit on AT - option
Maximum cut diameter (mm/in.)	610 / 24
Length of saw bar (mm/in.)	762 / 30
Chain type (in.)	3/4"
Top saw motor displacement	20cc std; 32cc - option

MAIN/FELLING SAW

Type and pitch	Waratah auto-tension 3/4"
	Saw prox std; transducer w/saw limit on AT - option
Maximum cut diameter (mm/in.)	950 / 37.4
Length of saw bar (mm/in.)	1118 / 44
Chain type (in.)	3/4"
Saw motor	50cc (10t sprocket) std
	63cc (11t sprocket) - option
Oil tank capacity (L/gal.)	22 / 5.8

SPECIFICATIONS**HYDRAULIC SYSTEM**

Maximum operating pressure (MPa/psi)	35 / 5,076
Maximum pump capacity (L/min., gal./min.)	400 / 106
Optimum flow (L/min., gal./min.)	360 @ 15 MPa / 95 @ 2,176 psi

CARRIER RANGE

Tracked (metric tons)	40+
-----------------------	-----

CONTROL AND MEASURING SYSTEM

TimberRite H-16

OPTIONAL EQUIPMENT

Second rotator motor
Fixed or floating top/front knife
Optional top saw motor sizes
Auto-tension topsaw
Saw limit for topsaw (with AT unit)
Optional main saw motor sizes
High-capacity upper delimb
Measuring wheel options (gear-cut coarse, serrated, shouldered)
Debarking fixed, outer feed rollers
Steel thumbnail fixed, outer feed rollers
Non-aggressive fixed roller
Alpine outer feed rollers
Feed motors - high speed / high torque (see cc above)
Second diameter sensor
Find end sensor
Cradle for common stick/dipper widths
Converter pin
Dog-bone link
Color marking LED 1 color
Color marking SED 3 color
Color marking SED & LED
Snow hole guarding
Stump treatment (less tank and pump)
Pressure sensors (M, CD, T)
Carrier hydraulic filter kit
Toolbox
Uptime kit

