



628HX

The new, high-capacity 628HX harvester provides quick and agile performance. This durable head delivers impressive feeding with exceptional delimiting and felling capabilities – all in one productive package.

OVERVIEW

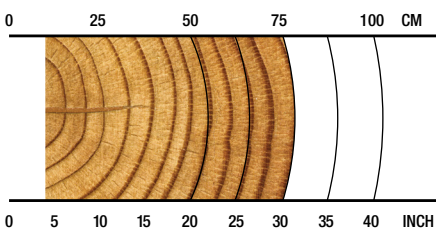
Harvesting, roadside or deck processing

APPLICATIONS

Hardwood, softwood harvesting or processing

Late or final thinnings/clear felling

RECOMMENDED RANGE



10-75 cm / 3.9-29.5 in.

SPECS

-  **5390 kg / 11,883 lb.**
Net Weight
-  **35 MPa / 5,076 psi**
Max Hydraulic Pressure
-  **1080 mm / 42 in.**
Max Delimit Opening
-  **1100 mm / 43 in.**
Max Feed Roller Opening
-  **980 mm / 39 in.**
Max Sawing Capacity
-  **43+ metric tons**
Carrier Size

SPECIFICATIONS

DIMENSIONS	
Height, to boom pin (harvest position) (mm/in.)	3870 / 152
Width, head open (mm/in.)	2310 / 91
WEIGHT	
Base weight standard rotator, excluding link and some options (kg/lb.)	5390 / 11,883
ROTATION	
	360 continuous, stump treatment option
	Single or twin rotate option
DELIMBING	
Delimiting knives	1 fixed/floating front, 2 cast upper and lower moving
Maximum delimb opening standard cast knives (mm/in.)	1080 / 42
DRIVE	
Quantity of drive rollers	3
Motor cc - option 1 (drive, fixed)	1395, 800
Maximum feed speed - option 1 (m/s, ft/s)	4 / 13
Maximum roller opening (mm/in.)	1100 / 43
Minimum feed arm diameter (mm/in.)	80 / 3.15
TOP SAW	
Type and pitch	Waratah 3/4" manual tension Saw prox std; transducer w/saw limit on AT - option
Maximum cut diameter (mm/in.)	610 / 24
Length of saw bar (mm/in.)	762 / 30
Chain type (in.)	3/4"
Top saw motor displacement	20cc std; 32cc - option
MAIN/FELLING SAW	
Type and pitch	Waratah auto-tension 3/4" Saw prox std; transducer w/saw limit on AT - option
Maximum cut diameter (mm/in.)	980 / 39
Length of saw bar (mm/in.)	1143 / 45
Chain type (in.)	3/4"
Saw motor	50cc (10t sprocket) std 63cc (11t sprocket) option
Oil tank capacity (L/gal.)	22 / 5.8

SPECIFICATIONS

HYDRAULIC SYSTEM	
Maximum operating pressure (MPa/psi)	35 / 5,076
Maximum pump capacity (L/min., gal./min.)	320-360 / 85-95
Optimum flow (L/min., gal./min.)	360 @ 15 MPa / 95 @ 2,176 psi
CARRIER RANGE	
Tracked (metric tons)	43+
CONTROL AND MEASURING SYSTEM	
	TimberRite H-16
OPTIONAL EQUIPMENT	
Second rotator motor	
Fixed or floating top/front knife	
Optional top saw motor sizes	
Auto-tension top saw	
Saw limit for top saw (with AT unit)	
Optional main saw motor sizes	
Measuring wheel options (gear-cut coarse, serrated, shouldered)	
Debarking fixed, outer feed rollers	
Steel thumbnail fixed, outer feed rollers	
Alpine outer feed rollers	
Second diameter sensor	
Find end sensor	
Cradle for common stick/dipper widths	
Converter pin	
Dog-bone link	
Color marking LED 1 color	
Color marking SED 3 color	
Color marking SED & LED	
Stump treatment (less tank and pump)	
Rotary manifold with stump treatment port (see stump treatment)	
Harvesting guarding	
Snow hole guarding	
Pressure sensors (M, CD, T)	
Carrier hydraulic filter kit	
Toolbox	
Hose kit	
Uptime kit	