

HARVESTING/PROCESSING AND FELLING HEADS



600 HX SERIES





It's no coincidence that Waratah has been an industry-leader for more than 50 years. Because we've always listened to you to design durable, more productive and efficient harvesting and processing heads proven for your application.

At our facilities in Finland and New Zealand, each head is made to order, so you get exactly what you need. Our heads are built to work with advanced technology providing precise control with accurate diameter and length measuring. With on-site facility testing, each product is proven on our time to be profitable on yours.

Our commitment to your success goes beyond product quality. When you put our heads to work, our global support network goes to work for you – from helping you choose the right head, to installation and startup, to being on site when you need us.

We offer the widest range of harvester/processor heads on the market. So whether you're harvesting at the stump, processing at the landing or somewhere in between, Waratah is built to work for you all over the world.



"In our industry, Waratah is the standard. The heads have only gotten stronger, faster, with more flow and better measuring."

Reid Lind
Owner, Lind Logging

600 SERIES

Proven in hardwood and softwood applications,
Waratah 600-Series harvesters balance toughness with precision.

High load-bearing hanging
bracket and rotator

High performance and efficient valves

Accurate length measuring in single- or multi-stem
applications with many optional wheel styles

Standard top saws in .404 or 3/4" pitch

Advanced delimb geometry for fast picking and stem catching

Single or twin lower delimb options

Optional floating or fixed heavy-duty front knives

Proportional soft clamping for delimb and drive arms for
less friction and fuel burn

Heavy-duty cast and fabricated delimb arms with
wear-resistant replaceable knife inserts

Feed wheel options
to suit any application



Waratah

Continuous 360-degree rotation with clean through-nose and from-the-side hose configurations

Easy-to-service and well-protected hydraulics

Advanced on-board controller and diagnostics

Heavy-duty steel frames

Laser find-end log alignment

Hardened alloy long-lasting steel pins with split nut pin retention

High-torque main saw motors with auto-chain tension for long service life and available in .404 or 3/4" pitch configurations

Powerful feed motors appropriately sized for best feeding performance

Rugged saw box designed for multiple logs, butt flare and low stump heights when harvesting

Three- or four-wheel synchronized drive configurations with log shuffling in four-wheel drive multi-stem applications



624HX

As part of the all-new HX line, the new 624HX is faster, smarter and stronger than ever before. This powerhouse delivers impressive log picking, feeding and handling with unmatched uptime – taking your productivity to the extreme.

OVERVIEW

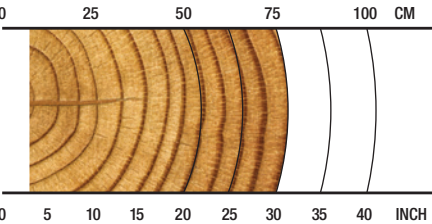
Harvesting, roadside or deck processing

APPLICATIONS

Hardwood, softwood harvesting or processing







Late or final thinnings/ clear felling

RECOMMENDED RANGE



8-76 cm / 3-30 in.

SPECS

-  **3990 kg / 8,796 lb.**
Net Weight
-  **35 MPa / 5,076 psi**
Max Hydraulic Pressure
-  **1025 mm / 40 in.**
Max Delimb Opening
-  **1100 mm / 43 in.**
Max Feed Roller Opening
-  **825 mm / 32.5 in.**
Max Sawing Capacity
-  **35+ metric tons**
Carrier Size



626HX

As part of the all-new HX line, the new 626HX is faster, smarter and stronger than ever before. This powerhouse redefines the legend, delivering impressive feeding and delimiting with unmatched uptime – taking your productivity to the extreme.

OVERVIEW

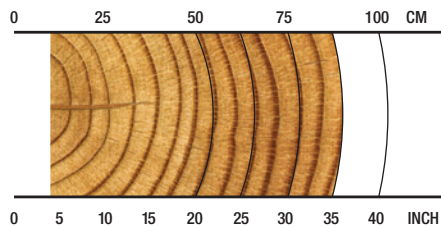
Harvesting, roadside or deck processing

APPLICATIONS

Hardwood, softwood harvesting or processing

Late or final thinnings/ clear felling

RECOMMENDED RANGE



10-88 cm / 4-35 in.

SPECS



4600 kg / 10,141 lb.
Net Weight



35 MPa / 5,076 psi
Max Hydraulic Pressure



1080 mm / 41.7 in.
Max Delimb Opening



1100 mm / 43 in.
Max Feed Roller Opening



950 mm / 37.4 in.
Max Sawing Capacity



40+ metric tons
Carrier Size



628HX

The new, high-capacity 628HX harvester provides quick and agile performance. This durable head delivers impressive feeding with exceptional delimiting and felling capabilities – all in one productive package.

OVERVIEW

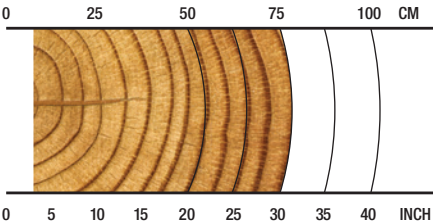
Harvesting, roadside or deck processing

APPLICATIONS

Hardwood, softwood harvesting or processing

Late or final thinnings/clear felling

RECOMMENDED RANGE



10-75 cm / 3.9-29.5 in.

SPECS



5390 kg / 11,883 lb.
Net Weight



35 MPa / 5,076 psi
Max Hydraulic Pressure



1080 mm / 42 in.
Max Delimb Opening



1100 mm / 43 in.
Max Feed Roller Opening



980 mm / 39 in.
Max Sawing Capacity



43+ metric tons
Carrier Size



LPX

Our all-new LPX is a multi-purpose loader-processor built to work in tight spaces. With a high, wide saw box and large capacity, you get amped-up deck processing and impressive log handling to keep timber moving – taking your productivity to the extreme.

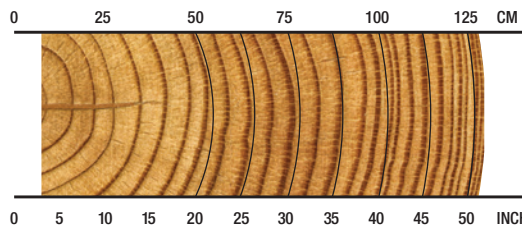
OVERVIEW

Processing roadside; processing under a yarder, clearing the chute; loading and processing where space is limited.

APPLICATIONS

Processing
Loading/processing
Shovel logging

RECOMMENDED RANGE



8-132 cm / 3-52 in.

SPECS



4070 kg / 8,973 lb.
Net Weight



35 MPa / 5,076 psi
Max Hydraulic Pressure



1219 mm / 48 in.
Max Delimit Opening



1321 mm / 52 in.
Max Feed Roller Opening



780 mm / 31 in.
Max Sawing Capacity



35+ metric ton
Carrier Size



FL90

Big on performance and equally capable in many felling applications, the FL90 directional felling head offers strength, agility and smarts. It makes no compromises with enhanced durability, a large capacity and intelligence to work fast. Simply put, it's perfectly sized for productivity.

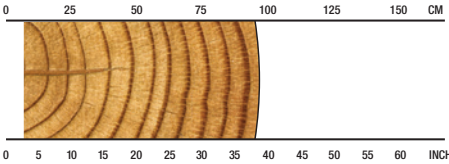
OVERVIEW

Thinnings, steep slope, shovel logging/hoe-chucking, topping, storm damage, clean-up.

APPLICATIONS






- Shovel logging
- Late or final thinnings/clear felling
- Topping
- Storm damage
- Steep slope

RECOMMENDED RANGE



8-96 cm / 3.1-37.8 in.

SPECS

-  **2265 kg / 4,993 lb.**
Net Weight
-  **35 MPa / 5,076 psi**
Max Hydraulic Pressure
-  **1300 mm / 51.2 in.**
Max Grapple Opening
-  **960 mm / 38 in.**
Max Sawing Capacity
-  **20+ metric ton**
Carrier Size

TimberRite™ X-20



The FL100's TimberRite™ X-20 system is Waratah's next generation felling head controller adaptable to any make of carrier. It features a new 7 in. display, trigger-style joysticks, and expanded operational capabilities, and configurable settings for customized felling head operation for any application. Some features include a stem counter, saw cut/home indication, tilt lock and on-board diagnostics. The TimberRite X-20 enhances the operational experience and provides more flexibility for any application to get the job done.



FL100

Unmatched strength plus versatility. Meet the FL100. This bonafide jack-of-all-trades owns the steepest of slopes and shovels the heaviest of timber, all while getting better logs to the landing. Simply put, it's a beast. And truly Built to Work®.

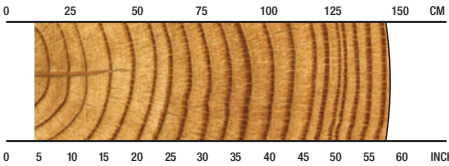
OVERVIEW

Thinnings, steep slope, shovel logging/hoe-chucking, topping, storm damage, clean-up.

APPLICATIONS






- Shovel logging
- Late or final thinnings/clear felling
- Topping
- Storm damage
- Steep slope

RECOMMENDED RANGE



11-147 cm / 4.3-57.9 in.

SPECS

-  **2995 kg / 6,600 lb.**
Net Weight
-  **35 MPa / 5,076 psi**
Max Hydraulic Pressure
-  **1470 mm / 57.8 in.**
Max Grapple Opening
-  **1000 mm / 39.3 in.**
Max Sawing Capacity
-  **30+ metric ton**
Carrier Size

MEASURING AND CONTROL SYSTEMS

We focus on providing you with accurate diameter and length measuring systems for profitable precision. Simplify operations and boost productivity with real-time statistics and measuring information, and wireless data transfer.

TIMBERRITE™ H-16



TimberRite H-16 elevates control while providing connectivity to keep you in the know. Using CAN-bus carrier communication, this easy-to-use system provides configurable and precise head control to increase efficiency and productivity.

If access to information is your game, connectivity options are available – supporting real-time information for online mapping/site monitoring, analytics, automated wireless data transfer or emails, or work and repair statistics for productivity monitoring.

On-screen production information and reports can be configured, with the latest StanForD file structures supported ensuring data can interchange with virtually any professional system in the forest industry. Additionally, the system has advanced diagnostic capabilities including remote access.

Configurable as either a pre-selection assortment prioritization system or the optional value-based bucking optimization system, TimberRite H-16 can offer solutions to meet any market needs.

KEY FEATURES



- **Onboard online mapping** - (optional) - access your location and visualize your production data.
- **Pre-Selection Priority** - (standard) - sequential optimization by cutting list instruction, and alternate log assignments.
- **Value Optimization** - (optional) - value-based optimization, intuitive prognosis through intelligent assessment of advanced matrices.
- **Touch-screen display**, or wireless keyboard and touch pad mouse.
- **Windows™ PC** - based controller integrates the harvester head measuring and control system with the high processing power of a personal computer.
- **StanForD 2007 or 2010** file structure compatibility ensures data interchanges with other professional systems in the forest industry.
- **Email and automatic file sending** - production reports, worksite instructions, repair follow-ups, calibration history, log tables, machine settings and harvesting instructions.
- **Telematics options using optional onboard solutions or WaratahMate™ smartphone app** - Easily transfer data wirelessly regardless of location, or through email via phone USB.
- **Work & repair statistics** - Monitor uptime, productivity and operating costs.
- **Species specific calibration and soft-clamping** settings for delimb and drive arms.
- **Operator specific settings** and configurable menus for quick navigation and adjustments.
- **Extensive site documentation** - expanded site, contractor, and machine information.
- **Simplified diagnostics** - input and output tests with built-in diagnostic troubleshooting assistance.

OPTIONS

Waratah heads are configurable to your application.
Consult your dealer for option availability.



Configurability

Waratah has a wide range of focused options for harvesting and processing applications including single- and multi-stem processing, multi-tree handling, and all models include options for softwood, crooked hardwood and debarking.



Color Marking

Waratah offers nozzle-applied color marking systems to simplify log identification. Three colors provide many assortment combinations to either the small or large ends, improving sorting and yard safety.



Main Saws, Saw Motors, Top Saws

The 600 series have high-cutting capacity main saws for extra productivity in large wood. Select models have .404 and 3/4" pitch chain options; all main saws include auto chain tensioning and are driven by durable and efficient high torque saw motors. The top saws increase productivity in any processing and crooked wood applications and are standard equipment on all 600 series models.



Measuring Wheels

Application-specific measuring wheels are engineered for accurate and consistent measuring in all tree species with enhancements for log quality. Selections include wide and narrow models, coarse and fine teeth options, and multi-stem, debarking configurations.



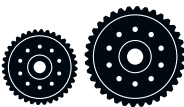
Delimb Arms

Select models can be configured for more productivity and log quality enhancements with specific harvesting or processing upper delimb arms, and single or twin lower delimb options. All have durable, pre-formed hardened steel replaceable knife inserts.



Rotators

Waratah offers a productive 360-degree continuous rotation on all of the 600 series models, with options of hoses through the rotate unit or from the side. It assures a cleaner look and more uptime. Also included are options of non-continuous 320-degree and Indexator brand options on select models.



Feed Rollers

Many feed roller options are available for a variety of applications, offering improved traction and reducing fiber damage. Wheel options include eucalyptus debarking, bar, thumbnail, alpine, rubber and non-aggressive styles.



Multi-tree Handling

Select models have multi-tree handling (MTH) capabilities, providing superior accumulating and precise bundle feeding with the option. MTH ability increases productivity and can easily be installed between the rotator and hanging bracket – even on existing heads.



Front Knives

Waratah offers heavy-duty floating or fixed front knife options with specialized profiles and cutting edges for superior delimiting in any application.



Stump Treatment

Stump treatment kits available for select models.

Talk to your Waratah dealer about more available options.

	624HX	626HX	628HX
DIMENSIONS			
Height, to boom pin (harvest position) (mm/in.)	3264 / 128.5	3400 / 134	3870 / 152
Width, head open (mm/in.)	2285 / 90	2310 / 91	2310 / 91
WEIGHT			
Base weight standard rotator, excluding link and some options (kg/lb.)	3990 / 8,796	4600 / 10,141	5390 / 11,883
ROTATION			
	360 continuous, stump treatment option	360 continuous, stump treatment option	360 continuous, stump treatment option
	Single or twin rotate option	Single or twin rotate option	Single or twin rotate option
DELIMBING			
Delimiting knives	1 fixed/floating front, 2 cast upper moving	1 fixed/floating front, 2 cast upper moving	1 fixed/floating front, 2 cast upper and lower moving, 1 fixed rear
Maximum delimb opening standard cast knives (mm/in.)	1025 / 40	1080 / 41.7	1080 / 42
Maximum delimb opening - wide cast knives (mm/in.)	1187 / 47 (option)		
Grapple area (ft ² , m ²)			
DRIVE			
Quantity of drive rollers	3	3	3
Motor cc - option 1 (drive, fixed)	1048, 630 (high speed)	1395, 800 (high torque)	1395, 800
Maximum feed speed - option 1 (m/s, ft/s)	5 / 16	4 / 13	4 / 13
Motor cc - option 2 (drive, fixed)	1395, 800 (high torque)		
Maximum feed speed - option 2 (m/s, ft/s)	4 / 13		
Maximum roller opening (mm/in.)	1100 / 43	1100 / 43	1100 / 43
Minimum feed arm diameter (mm/in.)	80 / 3.15	80 / 3.15	80 / 3.15
TOP SAW			
Type and pitch	Waratah 3/4" manual tension	Waratah 3/4" manual tension	Waratah 3/4" manual tension
	Saw prox std; transducer w/saw limit on AT - option	Saw prox std; transducer w/saw limit on AT - option	Saw prox std; transducer w/saw limit on AT - option
Maximum cut diameter (mm/in.)	560 / 22	610 / 24	610 / 24
Length of saw bar (mm/in.)	711 / 28	762 / 30	762 / 30
Chain type (in.)	3/4"	3/4"	3/4"
Top saw motor displacement	20cc std; 32cc - option	20cc std; 32cc - option	20cc std; 32cc - option
MAIN / FELLING SAW			
Type and pitch	Waratah auto-tension 3/4"	Waratah auto-tension 3/4"	Waratah auto-tension 3/4"
	Saw prox std; transducer w/saw limit on AT - option	Saw prox std; transducer w/saw limit on AT - option	Saw prox std; transducer w/saw limit on AT - option
Maximum cut diameter (mm/in.)	825 / 32.5	950 / 37.4	980 / 39
Length of saw bar (mm/in.)	1016 / 40	1118 / 44	1143 / 45
Chain type (in.)	3/4"	3/4"	3/4"
Saw motor	50cc (10t sprocket) 63cc (11t sprocket) - option	50cc (10t sprocket) std 63cc (11t sprocket) - option	50cc (10t sprocket) std 63cc (11t sprocket) - option
Oil tank capacity (L/gal.)	22 / 5.8	22 / 5.8	22 / 5.8
HYDRAULIC SYSTEM			
Maximum operating pressure (MPa/psi)	35 / 5,076	35 / 5,076	35 / 5,076
Maximum pump capacity (L/min., gal./min.)	400 / 106	400 / 106	400 / 106
Optimum flow (L/min., gal./min.)	360 @ 15 MPa / 95 @ 2,176 psi	360 @ 15 MPa / 95 @ 2,176 psi	360 @ 15 MPa / 95 @ 2,176 psi
CARRIER RANGE			
Tracked (metric tons)	35+	40+	43+
CONTROL AND MEASURING SYSTEM			
	TimberRite H-16	TimberRite H-16	TimberRite H-16

This brochure has been compiled with care for worldwide circulation. While general information, pictures and descriptions are provided, some illustrations and text may include options and accessories not available in all regions. Please contact your local dealer for details. Waratah reserves the right to change specifications and design for products described in this brochure without notice. No liability for errors and omissions.

TECHNICAL DATA

600 SERIES

	LPX	FL90	FL100
DIMENSIONS			
Height, to boom pin (harvest position) (mm/in.)	2850 / 112	1847 / 73.7	2420 / 95.3
Width, head open (mm/in.)	2492 / 98.1	1780 / 70	2270 / 89.4
WEIGHT			
Base weight standard rotator, excluding link and some options (kg/lb.)	4070 / 8,973	2265 / 4,993	2995 / 6,600
ROTATION			
	360 continuous	360 continuous	360 continuous
	Single or twin rotate option	Single or twin rotate option	Twin rotate
DELIMBING			
Delimiting knives	1 fixed front, 2 cast upper moving		
Maximum delimb opening standard cast knives (mm/in.)	1219 / 48		
Maximum delimb opening - wide cast knives (mm/in.)			
Grapple area (ft ² , m ²)	3.79 / 0.35	4.8 / 0.45	8.4 / 0.78
DRIVE			
Quantity of drive rollers	3		
Motor cc - option 1 (drive, fixed)	1048, 630 (high speed)		
Maximum feed speed - option 1 (m/s, ft/s)	5 / 16		
Motor cc - option 2 (drive, fixed)			
Maximum feed speed - option 2 (m/s, ft/s)			
Maximum roller opening (mm/in.)	1321 / 52		
Minimum feed arm diameter (mm/in.)	80 / 3.15		
TOP SAW			
Type and pitch	Waratah 3/4" manual tension		
	Saw prox std; transducer w/saw limit on AT - option		
Maximum cut diameter (mm/in.)	711 / 28		
Length of saw bar (mm/in.)	813 / 32		
Chain type (in.)	3/4"		
Top saw motor displacement	20cc std; 32cc - option		
MAIN / FELLING SAW			
Type and pitch	Waratah auto-tension 3/4"	Waratah auto-tension 3/4"	Waratah auto-tension 3/4"
	Saw prox std; transducer w/saw limit on AT - option		
Maximum cut diameter (mm/in.)	780 / 31	960 / 38	1000 / 39.3
Length of saw bar (mm/in.)	1016 / 40	1016, 1118 / 40, 44	1140 / 45
Chain type (in.)	3/4"	3/4"	3/4"
Saw motor	50cc (10t sprocket)	50cc (10t sprocket) std	50cc (10t sprocket) std
	63cc (11t sprocket) - option	63cc (11t sprocket) - option	63cc (11t sprocket) - option
Oil tank capacity (L/gal.)	22 / 5.8	17 / 4.5	35 / 9.25
HYDRAULIC SYSTEM			
Maximum operating pressure (MPa/psi)	35 / 5,076	35 / 5,076	35 / 5,076
Maximum pump capacity (L/min., gal./min.)	400 / 106	360 / 95	300 / 79
Optimum flow (L/min., gal./min.)	360 @ 15 MPa / 95 @ 2,176 psi		
CARRIER RANGE			
Tracked (metric tons)	35+	20+	30+
CONTROL AND MEASURING SYSTEM			
	TimberRite H-16	TimberRite X-26	TimberRite X-20

	624HX	626HX	628HX	LPX	FL90	FL100
OPTIONAL EQUIPMENT						
Second rotator motor	Yes	Yes	Yes	Yes	Yes	STD
Fixed or floating top/front knife	Yes	Yes	Yes	No	N/A	N/A
Optional top saw motor sizes	Yes	Yes	Yes	Yes	N/A	N/A
Auto-tension topsaw	Yes	Yes	Yes	Yes	N/A	N/A
Saw limit for topsaw (with AT unit)	Yes	Yes	Yes	Yes	N/A	N/A
Optional main saw motor sizes	Yes	Yes	Yes	Yes	Yes	No
Saw limit for mainsaw	Yes	Yes	Yes	Yes	Yes	No
High-capacity upper delimb	Yes	Yes	Yes	No	N/A	N/A
Measuring wheel options (gear-cut coarse, serrated, shouldered)	Yes	Yes	Yes	Yes	N/A	N/A
Debarking fixed, outer feed rollers	Yes	Yes	Yes	Yes	N/A	N/A
Steel thumbnail fixed, outer feed rollers	Yes	Yes	Yes	Yes	N/A	N/A
Non-aggressive fixed roller	Yes	Yes	Yes	Yes	N/A	N/A
Alpine outer feed rollers	Yes	Yes	Yes	Yes	N/A	N/A
Feed motors - high speed / high torque	Yes	Yes	No	No	N/A	N/A
Second diameter sensor	Yes	Yes	Yes	Yes	N/A	N/A
Find end sensor	Yes	Yes	Yes	Yes	N/A	N/A
Cradle for common stick/dipper widths	Yes	Yes	Yes	Yes	Yes	Yes
Converter pin	Yes	Yes	Yes	Yes	No	No
Color marking LED 1 color	Yes	Yes	Yes	No	N/A	N/A
Color marking SED 3 color	Yes	Yes	Yes	No	N/A	N/A
Color marking SED & LED	Yes	Yes	Yes	No	N/A	N/A
Stump treatment (less tank and pump)	Yes	Yes	Yes	No	Yes	No
Dog-bone link	Yes	Yes	Yes	Yes	Yes	Yes
Harvesting guarding	Yes	No	Yes	No	N/A	N/A
Snow hole guarding	Yes	Yes	Yes	Yes	Yes	No
Pressure sensors (LS, M, CD, T)	Yes	Yes	Yes	Yes	Yes	Yes
Carrier hydraulic filter kit	Yes	Yes	Yes	Yes	Yes	Yes
Toolbox	Yes	Yes	Yes	Yes	Yes	Yes
Uptime kit	Yes	Yes	Yes	Yes	Yes	Yes
Work statistics	Yes	Yes	Yes	Yes	Yes	No





FORESTRY EQUIPMENT

For the latest model specifications and details, visit Waratah.com.

